

# Dalwing Roof Consulting Ltd.

Edmonton, AB

[www.dalwing.com](http://www.dalwing.com)

---

May 10, 2024

# Addendum No.1

## **Project 24D-0018 Edson Food Bank Roofing**

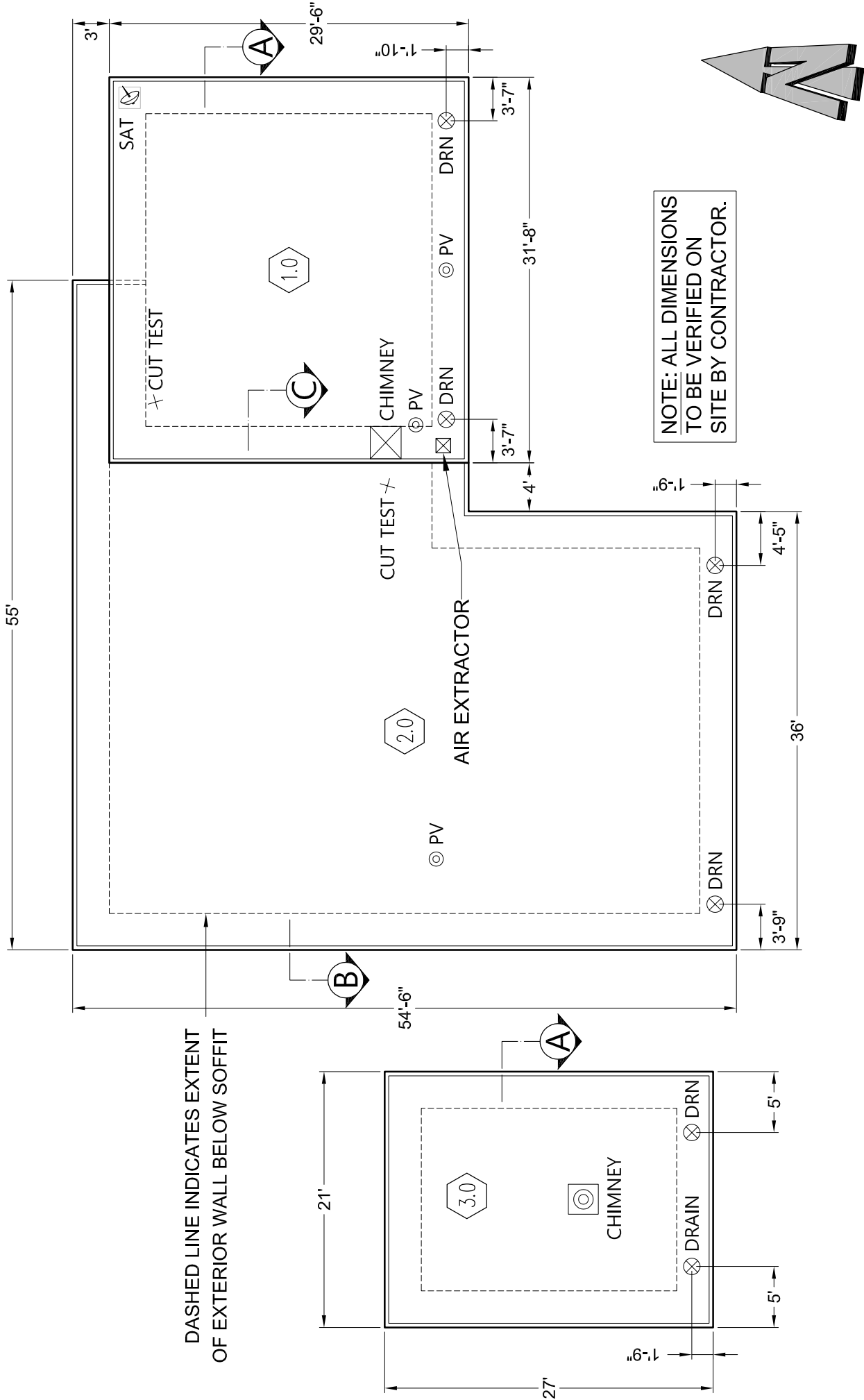
The following are changes to the Scope of Work for the above project. All costs related to these changes are to be included in the Bid Price.

1. Omit the Drawings in the original Bid Document.
2. Refer to the attached Drawings, which form part of the Bid Document.

Please direct any inquiries to:

Munro Williams, Arch.Tech., RRO  
ARCA Accepted Roofing Inspector  
Dalwing Roof Consulting Ltd.  
[mwilliams@dalwing.com](mailto:mwilliams@dalwing.com)

**END OF ADDENDUM NO.1**



DASHED LINE INDICATES EXTENT OF EXTERIOR WALL BELOW SOFFIT

NOTE: ALL DIMENSIONS TO BE VERIFIED ON SITE BY CONTRACTOR.

DRAWN BY: REP	DATE: 10 May, 2024
SCALE: NTS	REV: 1
PROJECT NUMBER: 24D-0018	

EDSON FOOD BANK  
 2024 ROOFING PROGRAM  
 4511-5 AVENUE, EDSON, ALBERTA

**Dalwing Roof Consulting Ltd.**  
 Edmonton, Alberta  
[www.dalwing.com](http://www.dalwing.com)

26 GA. PRE-FINISHED SHEET METAL CAP FLASHINGS  
TO ARCA STANDARDS, MAX. LENGTH 5 FEET

BUILD UP LUMBER PLATES, SLOPE TOP

2 PLY SBS MEMBRANE FLASHINGS TO ARCA STANDARDS  
FASTEN BASE SHEET UPTURN WITH  
SCREWS & PLATES AT MAX. 12" SPACING

MIN. 3"

1/2" PLYWOOD

NEW INSULATION

26 GA. PRE-FINISHED SHEET  
METAL FASCIA WITH HORZ.  
CENTRE CRIMP. DRIP EDGE  
ENGAGED WITH 24 GA. GALV.  
HOOK BAR.

EXISTING PRAPET DETAIL, TYPICAL

SECTION DETAIL A  
ROOF AREA 1.0 & 3.0 PARAPET

**Dalwing Roof Consulting Ltd.**

Edmonton, Alberta [www.dalwing.com](http://www.dalwing.com)

EDSON FOOD BANK  
2024 ROOFING PROGRAM  
4511-5 AVENUE, EDSON, ALBERTA

DRAWN BY: REP

DATE: 10 May, 2024

SCALE: NTS

REV: 1

PROJECT NUMBER: 24D-0018

2

3

26 GA. PRE-FINISHED SHEET METAL CAP FLASHINGS TO ARCA STANDARDS, MAX. LENGTH 5 FEET

NEW 2x4 PONY WALL, STUDS 24" O.C. 1/2" PLYWOOD BOTH SIDES, SLOPED TOP, INSULATION IN WALL NOT REQUIRED.

2 PLY SBS MEMBRANE FLASHINGS TO ARCA STANDARDS

FASTEN BASE SHEET UPTURN WITH SCREWS & PLATES AT MAX. 12" SPACING

1/2" PLYWOOD

3" MIN.

NEW INSULATION

26 GA. PRE-FINISHED SHEET METAL FASCIA WITH HORZ CENTRE CRIMP. DRIP EDGE ENGAGED WITH 24 GA. GALV. HOOK BAR.

### SECTION DETAIL B

ROOF AREA 2.0 PARAPET

FASTEN SELF ADHERING BASE SHEET MEMBRANE FLASHINGS W/ NO.12 x 3/4" SCREWS & 2" DIAM. 20 GA. BARBED PLATES AT MAX. 6" O.C. TO 9 FEET FROM EACH CORNER, 12" O.C. EVERYWHERE ELSE, 2 HORZ. ROWS.

BRICK WALL

MIN. 3/4" BEAD THERMOPLASTIC RUBBER SEALANT EXTEND BASE SHEET FLASHING ONTO BRICK HIT PIN ANCHORS, 1/4" x 1.5" AT MAX. 24" O.C.

26 GA. REGLET FLASHING  
HEX HEAD TEK SCREWS W/ NEOPRENE WASHERS

26 GA. LOWER COUNTER FLASHING

3/4" PLYWOOD, BEVELLED TOP EDGE

12"

### SECTION DETAIL C

ROOF TO BRICK WALL OR CHIMNEY

**Dalwing Roof Consulting Ltd.**

Edmonton, Alberta

[www.dalwing.com](http://www.dalwing.com)

EDSON FOOD BANK

2024 ROOFING PROGRAM

4511-5 AVENUE, EDSON, ALBERTA

DRAWN BY: REP

DATE: 10 May, 2024

SCALE: NTS

REV: 1

PROJECT NUMBER: 24D-0018

3

3