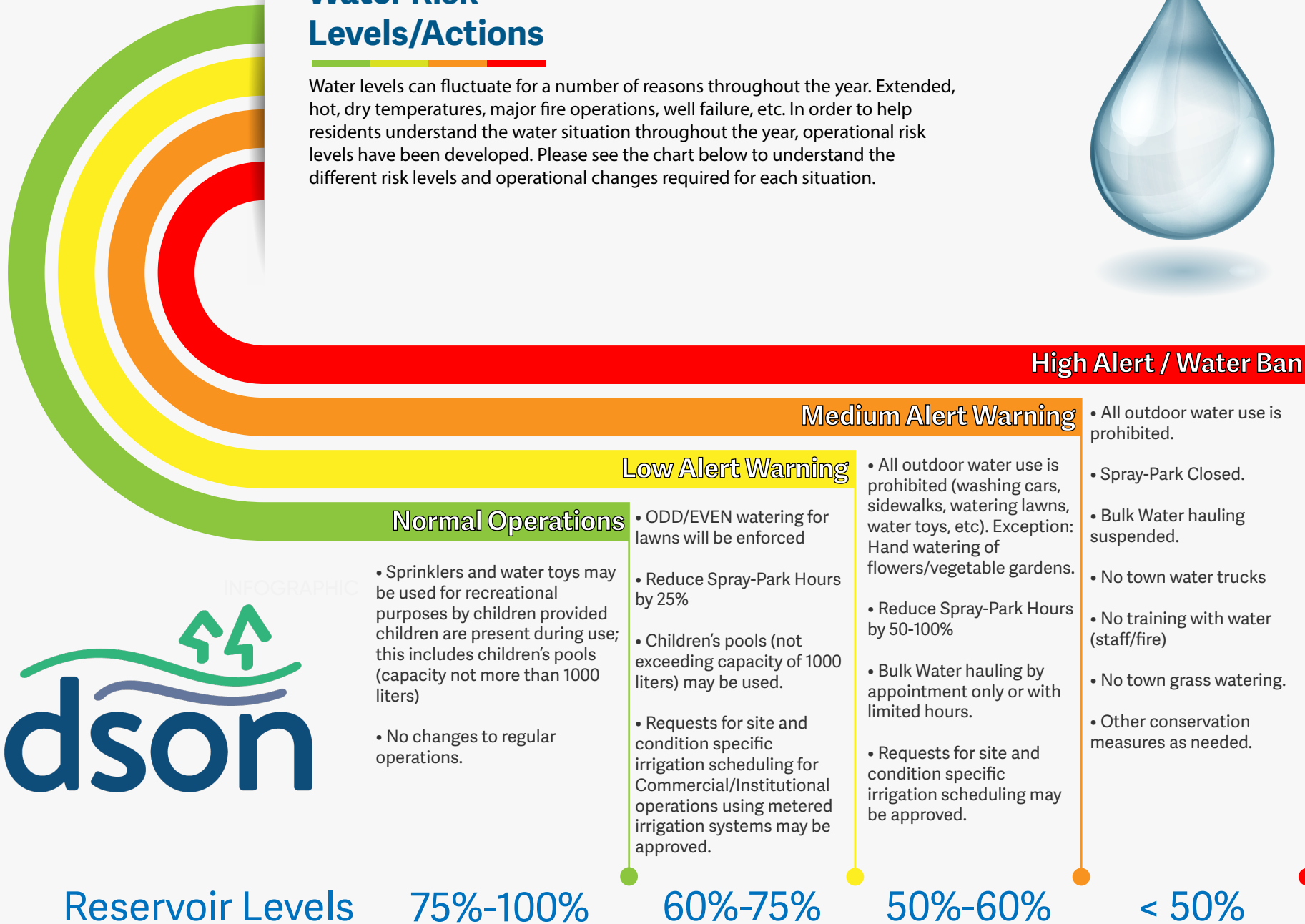


Water Risk Levels/Actions

Water levels can fluctuate for a number of reasons throughout the year. Extended, hot, dry temperatures, major fire operations, well failure, etc. In order to help residents understand the water situation throughout the year, operational risk levels have been developed. Please see the chart below to understand the different risk levels and operational changes required for each situation.



INFOGRAPHIC

Reservoir Levels

75%-100%

60%-75%

50%-60%

< 50%