

Diagrams and Descriptions for Flat Rate Projects

Congratulations on being approved to receive a grant from the Enabling Accessibility Fund (EAF). Below are diagrams and descriptions of accessibility standards for the construction of ramps, accessible washrooms and accessible doors. Please note that projects funded by EAF must comply with accessibility guidelines and regulations. Diagrams and information are provided below for reference.

Disclaimer

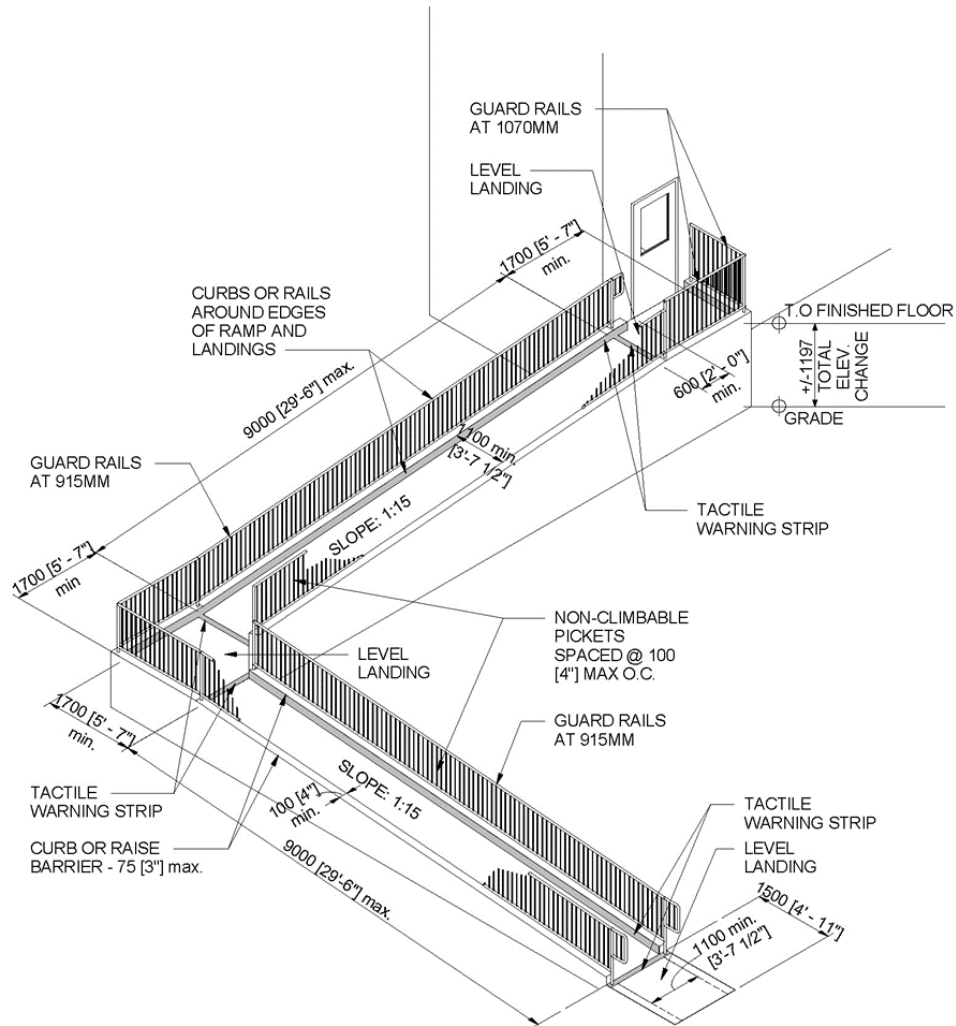
Dimensions and standard requirements outlined in the diagrams are based on the National Building Code 2015 with precedent from the CSA B651-18 Accessible Design for the Built Environment Standard. Contact your Local Authority Having Jurisdiction and local and municipal building codes for local standards. Exact standards and requirements as they relate to acceptable building code solutions vary between provinces, cities and municipalities. Appendix diagrams are shown for reference only. They should only be applied as a suggestion to the acceptable construction methods to meet the intent of the building code.

With the permission of Canadian Standards Association, (operating as “CSA Group”), 178 Rexdale Blvd., Toronto, ON, M9W 1R3, material is reproduced from CSA Group’s standard CSA-B651-18 Accessible design for the built environment. This material is not the complete and official position of CSA Group on the referenced subject. The position is represented solely by the Standard in its entirety. While use of the material is authorized, CSA Group is not responsible:

- for how we present the data in this document
- for any representations and interpretations

No further reproduction is permitted. For more information or to purchase standard(s) from CSA Group, please visit store.csagroup.org or call 1-800-463-6727.

Ramps



Source: Figure 33, **CSA-B651-18 Accessible design for the built environment**. © 2018 Canadian Standards Association

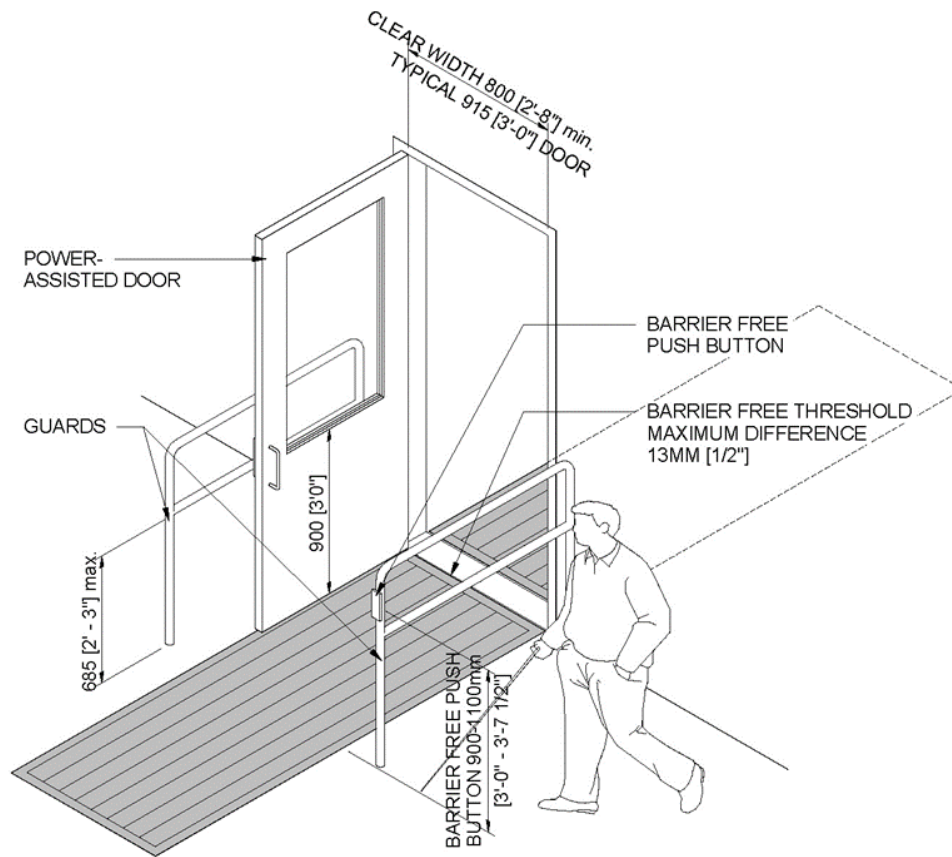
Include

- Ramp and landings
 - (Ramp: width: 1100 mm or 3'-7", slope: 1/15)
 - (Landingsize: 5'-0" (1500mm)x5'-0" (1500mm))
- Curbs, guard rails, handrails and pickets
- Structural framing
- Tactile warning/colour contrasting strips
- Shallow foundation (not deeper than 6' / 1.8m)

Additional options possible

A weather cover for exterior ramps

Accessible doors



Source: Figure 22, CSA-B651-18 Accessible design for the built environment. © 2018 Canadian Standards Association

Exterior Door Includes

- Insulated door complete with insulated glass window
 - Dimensions: 3'-0" W x 7'-0" H (900mm W by 2100mm H)
 - Door Construction: Insulated Hollow metal, welded. Uval de: 2.0 complete with dual pane glass light
- Insulated frame
 - Frame construction: insulated/thermally broken pressed steel, welded
- Door hardware set
- Automatic door operator and controls
- Electrical power
- Barrier-free threshold
- Colour contrasting painting

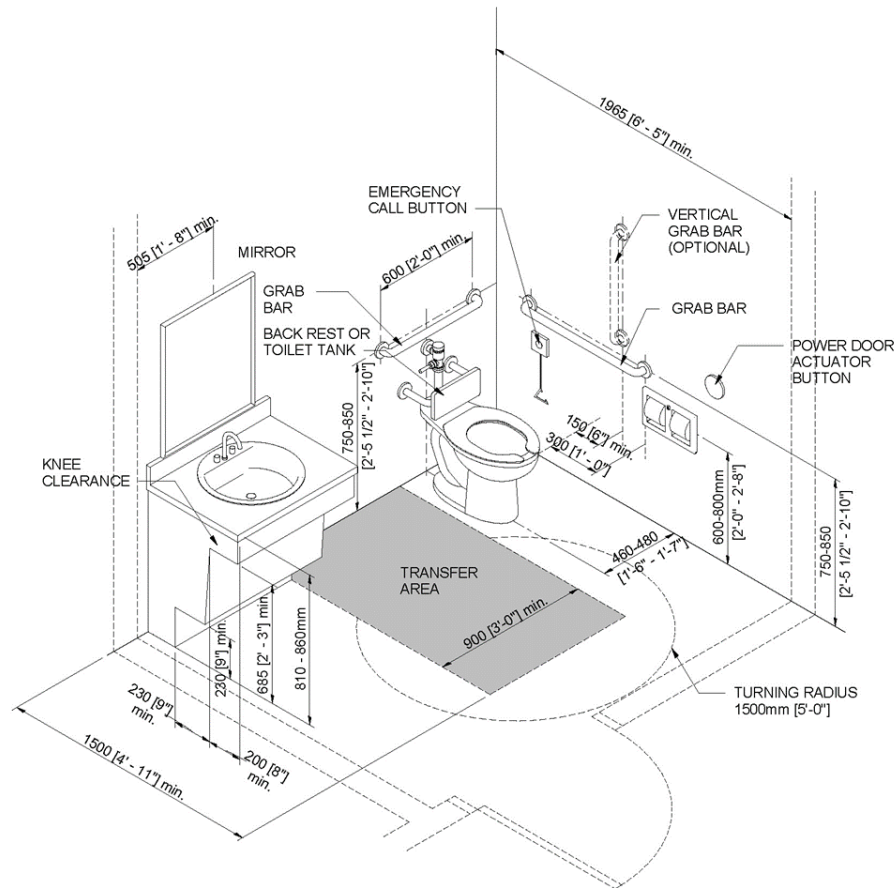
Interior Door Includes

- Non-Insulated door with non insulated glass window 3' (900mm) from the floor to increase visibility
 - Dimensions: 3'-0" W x 7'-0" H (900mm W by 2100mm H)
 - Door Construction: Hollow metal, welded
- Non-Insulated frame
 - Frame construction: pressed steel, welded
- Door hardware set
- Automatic door operator and controls
- Electrical power
- Barrier-free threshold
- Colour contrasting painting

Additional options possible

Cane detectable guardrails

Accessible single occupant washroom general floor plan



Source: Figure 47, CSA-B651-18 Accessible design for the built environment. © 2018 Canadian Standards Association

Dimensions: 75 SQFT (6.7 SM)

Includes

- Barrier-free toilet
 - Accessible manual flush valve toilet
- Barrier-free sink and vanity
 - Vanity complete with knee protection from plumbing lines
- Two grab bars
- Accessible angled mirror

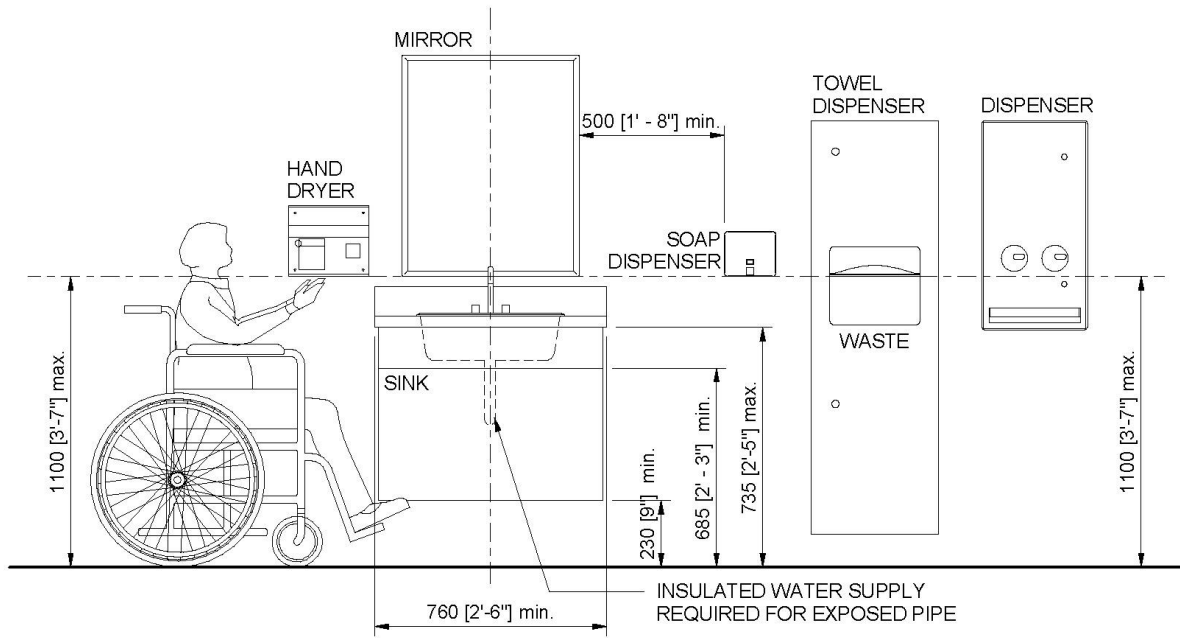
- Washroom accessories

- Soap dispenser
- Toilet paper dispenser
- Paper towel dispenser or hand dryer
- Napkin disposal
- Signage
- Non-slip flooring
- Colour contrasting painting
- Braille signage
- Interior finishes

Additional options possible

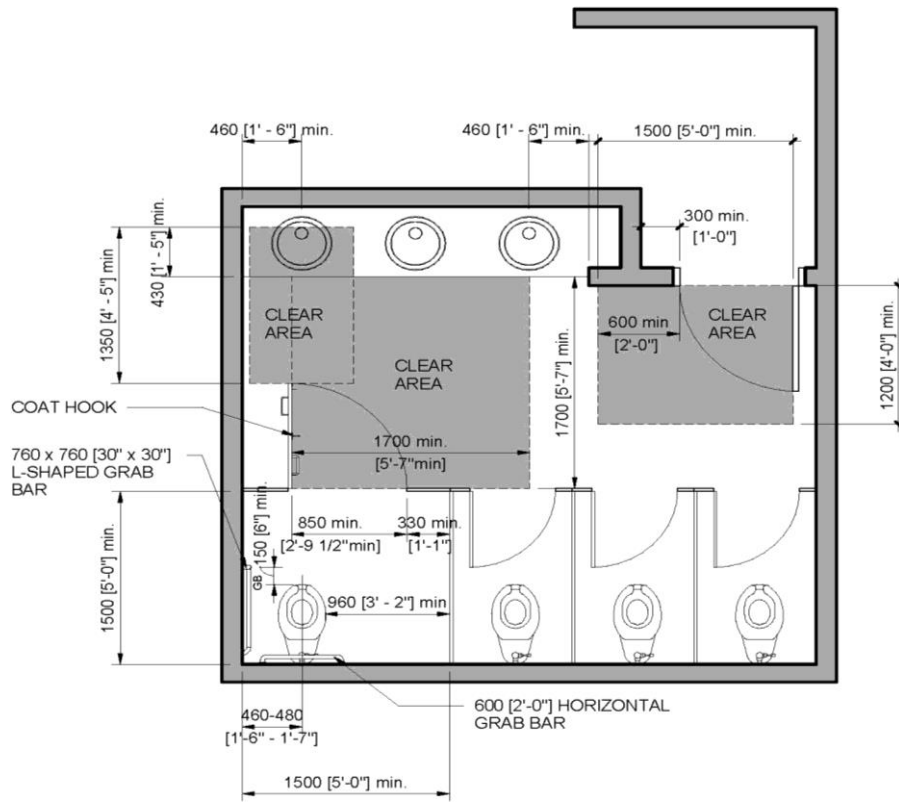
- Accessible urinal
- Emergency call button
- Power assisted adult change table
- Barrier-free shower

Washroom accessory heights



Source: Figure 42, **CSA-B651-18 Accessible design for the built environment**. © 2018 Canadian Standards Association

Multi-stall washroom with accessible stall general floor plan



Source: Figure 40, CSA-B651-18 Accessible design for the built environment. © 2018 Canadian Standards Association

Dimensions: 90 SQFT (8.4 SM)

Includes

- Barrier-free toilet
 - Accessible manual flush valve toilet
- Barrier-free sink and vanity
 - Vanity complete with knee protection from plumbing lines
- Two grab bars
- Accessible angled mirror

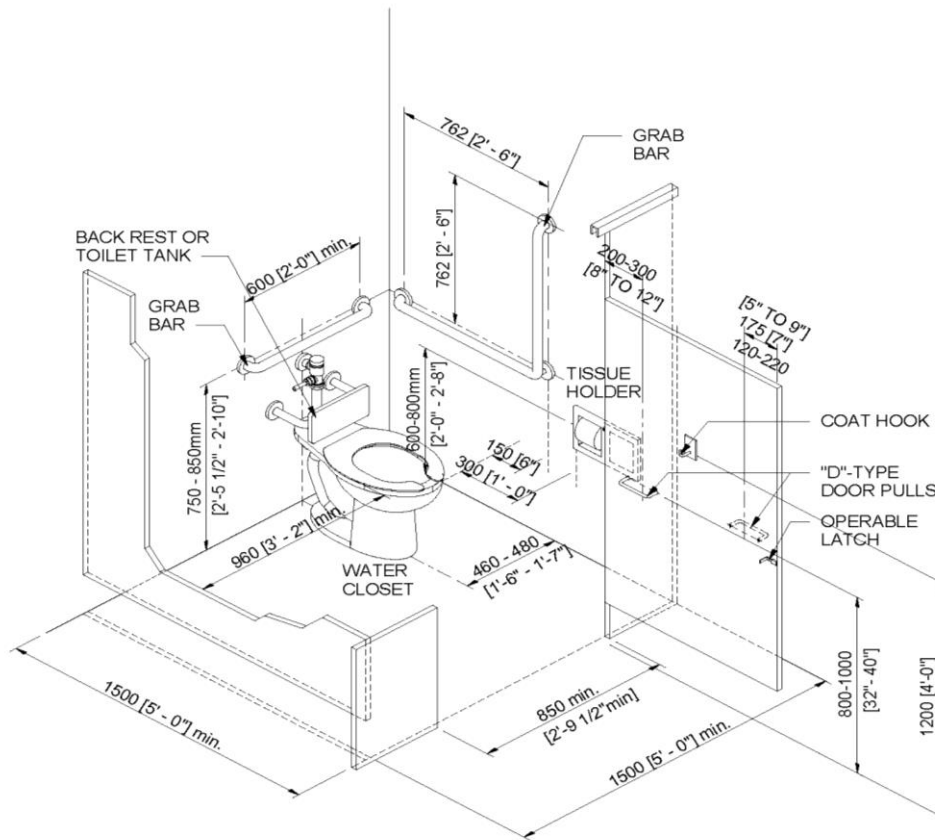
- Washroom accessories

- Soap dispenser
- Toilet paper dispenser
- Paper towel dispenser or hand dryer
- Napkin disposal
- Signage
- Metal washroom partitions and door
- Non-slip flooring
- Color contrasting painting
- Braille signage
- Interior finishes

Additional options possible

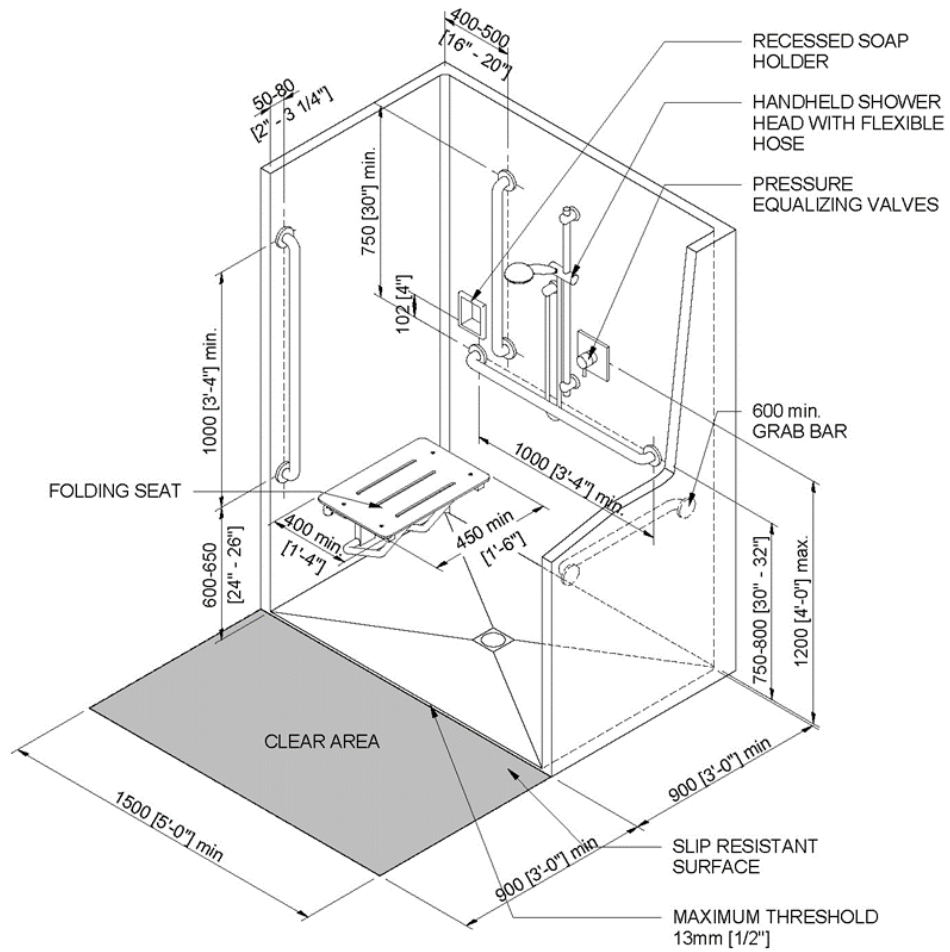
- Accessible urinal
- Emergency call button
- Power assisted adult change table
- Barrier-free shower

Accessible stall general floor plan



Source: Figure 44, CSA-B651-18 Accessible design for the built environment. © 2018 Canadian Standards Association

Barrier-free shower general floor plan



Source: Figure 49, CSA-B651-18 Accessible design for the built environment. © 2018 Canadian Standards Association

Includes

- Shower kit
 - Held shower head and accessible controls
- Recessed soap holder
- Folding seat
- Four grab bars
- Non-slip flooring

Glossary

Accessible door: Door with a width that ranges from 850mm to 1220mm. The door includes hardware to use with a single fist with limited strength and does not need tight grasping or twisting of the wrist. The door also includes power assisted operator and controls. The door transition is between two spaces. The transition of the finished floor between both areas is less than 13mm. The finishing includes colour contrasting painting.

Accessible stall washroom: A larger stall within a washroom with many stalls. It has adequate wheelchair turning radius and adequate transfer space. The accessible toilet, sink, vanity, grab bars, door and washroom accessories are at an accessible height. The finishes include signage, non-slip flooring and colour contrasting painting.

Barrier: A physical, architectural or technological obstacle. It makes it difficult for persons with disabilities to access or circulate in community spaces and workplaces. It prevents persons with disabilities to access or use public spaces on an equal basis with others.

Braille signage: A sign including braille. Braille is a system where raised dots represent letters and words. Unified English Braille is the braille standard for Canada.

Cane detectable guardrails: A rail system that falls within the detection range of a long white cane.

Colour contrast painting: Walls painted in a different colour than the door frames, floor, adjacent wall or plumbing fixtures. Color contrast painting helps with depth perception for those with low vision.

Deep foundation: Building foundations which are deeper than 6' -0". Deep foundations are sometimes necessary in parts of Canada where the ground material is not stable. This includes locations with high clay or silt in the ground. They require specialized construction equipment for installation.

Ramp: A sloping walkway leading from one level to another, which has a slope not more than 1:15.

Ramp curb: A sloped surface built into a curb.

Ramp Rise: Height between floor or ground surface and top of access ramp landing.

Retrofit (upgrading an existing space): Install (new or modified parts or equipment) in something previously constructed. For example, to make upgrades to your existing washroom to include accessible features.

Renovation: Create a new space to enhance accessibility, without adding additional square feet. For example, if you make an accessible washroom in what was previously a storage room.

Single occupant accessible washroom: A single person washroom (with use of a caregiver). It includes adequate wheelchair turning radius and adequate transfer space. The accessible toilet, sink, vanity, grab bars, door, washroom accessories are at an accessible height. The finishes include signage, non-slip flooring and colour contrasting painting.

Tactile warning strips or indicator: Letters or graphics slightly raised above the surface. They can be detectable underfoot or by a long white cane. They assist persons with low vision or blindness navigate the space.

Weather cover: A cover to an exterior ramp including steel frame and metal roof.