



**2024 YCE Parking Public Engagement
What We Heard Report**



2024 YCE Parking Engagement – What We Heard Report

Table of Contents

- 2024 YCE Parking Engagement – What We Heard Report 2
- Table of Contents 2
- Introduction and Survey Highlights 3
- Consultation Timeline 6
- Advertising and Social Media Promotion..... 5
- Survey Results..... 8
- Appendix 1: Public Comments13



Introduction

The Town of Edson conducted a public engagement to gather feedback from residents on proposed parking options for the Edson and District Leisure Centre/future YCE Multiplex. As the facility continues to evolve and expand, addressing parking needs has become a critical issue, especially with increased usage during events and activities.

The engagement included an in-person consultation with adjacent residents and an online survey open to the entire community.

The consultation and survey aimed to assess public sentiment on three proposed parking layout options, each designed to balance accessibility, environmental impact, and neighborhood concerns. This report summarizes the key findings of the survey and highlights community preferences and concerns regarding the proposed parking solutions.

The results will assist in shaping future decisions to ensure that the parking infrastructure supports both the needs of the facility and the surrounding community. A primary benefit from such a process is the opportunity to identify solutions that may not have otherwise been presented. Public engagement information will be included in the Multiplex Project Management evaluation process, along with feedback from internal Town of Edson departments, architectural design consultants, and civil planning consultants.

This *'What We Heard Report'* includes an overall summary of survey highlights, an explanation of how the collected data informs potential recommendations, a description of the next steps in the process, an overview of the process to date, and an appendix containing all survey results and comments collected.

Thank you to those who took the time to provide responses to the survey and attend the in-person consultation.

Survey Highlights

- 15 adjacent residents attended the in-person consultation
- 188 respondents to the survey
- Overall, residents prioritized preserving green space, ensuring safety, and adopting environmentally sustainable parking solutions.
- While Option 2 was the most popular (a larger long narrow lot on the west side of 49 St), concerns about traffic congestion, pedestrian safety, proximity to schools, and loss of recreational green space were significant.
- A balanced approach will be necessary to meet the facility's parking needs while maintaining the character of the surrounding areas.

The survey presented three parking layout options, each with distinct advantages and challenges.

Option 1 (east of 48 ST) was favored for reducing congestion on busy streets and providing large overflow parking during events. It faced opposition due to environmental concerns impacting the forested area, the removal of green spaces, and its distance from the entrance, especially during bad weather. Nearby residents also raised concerns over potential vandalism and noise in a secluded parking lot.

Option 2 (west of 49 ST) was the most favored by respondents, appreciated for its convenient location near the main entrance and potential for future expansion. However, respondents expressed concerns about its impact on Water Tower Park, increasing traffic near schools, and the potential for students to occupy the parking lot during school hours.

Option 3 (west of 49 ST) offered a compromise, preserving some green space and minimizing the intrusion into residential areas. However, some respondents felt it lacked sufficient capacity for large events, and safety concerns were raised due to pedestrians needing to cross busy streets near schools.

Generally, community responses reflected concerns about the impact on green spaces, traffic congestion, pedestrian safety, and proximity to the facility's new main entrance. Many of the suggestions offered valuable insight and could potentially be integrated into a final design.

Findings

An analysis of the public consultation, combined with Town of Edson interdepartmental reviews of the proposed options, identified the following common themes:

- All options present challenges for safe pedestrian and traffic interaction when crossing roads, potentially requiring additional crosswalks and/or crossing lights, which would add costs for safe implementation.
- A parking lot on the west side of 49 Street poses risks because the entrance and exit points are too close to the 10th Ave and 12th Ave intersections, and the existing intersections cannot be properly aligned with the new lot entrances.
- Despite the area being a 30 km/hr zone, concerns remain about traffic speed and congestion during peak usage times.
- A parking lot on the east side of 48 Street is not easily identified when accessing the facility's main entrance on the north-west side.
- An alternative option emerged from the consultation process. Closing 48 Street at 12 Avenue would create an opportunity to naturally extend the parking lot at the northeast end of the existing site, providing access to additional parking on the east side. This closure would also reduce concerns about pedestrian-traffic conflicts when crossing the road to access the facility. This would also address concerns about maintaining adequate green space and landscaping while minimizing the impact on the forested area. Consolidating parcels to the east of the existing EDLC site and closing 48 Street between 10th and 12th Ave would enable safer parking options on the east side of the facility.

Next Steps

- Release the “What We Heard Report” and make it available on the Town of Edson website.
- As part of overall project design, explore further a parking concept that emerged during this process, focusing on parking along the east side of the facility in the context of 48 St being closed off at 12 Ave.
- Share with the public how the consultation input influenced the final design and provide the rationale for the final decision.

Consultation Timeline

To ensure a thorough and inclusive process, the following timeline was established for community engagement and decision-making regarding the Edson and District Leisure Centre/Future YCE Multiplex parking options:

August 19, 2024: Postcards were delivered to adjacent residents, inviting them to a community engagement session on August 28th. Parking options were presented, and residents were encouraged to complete an initial survey.

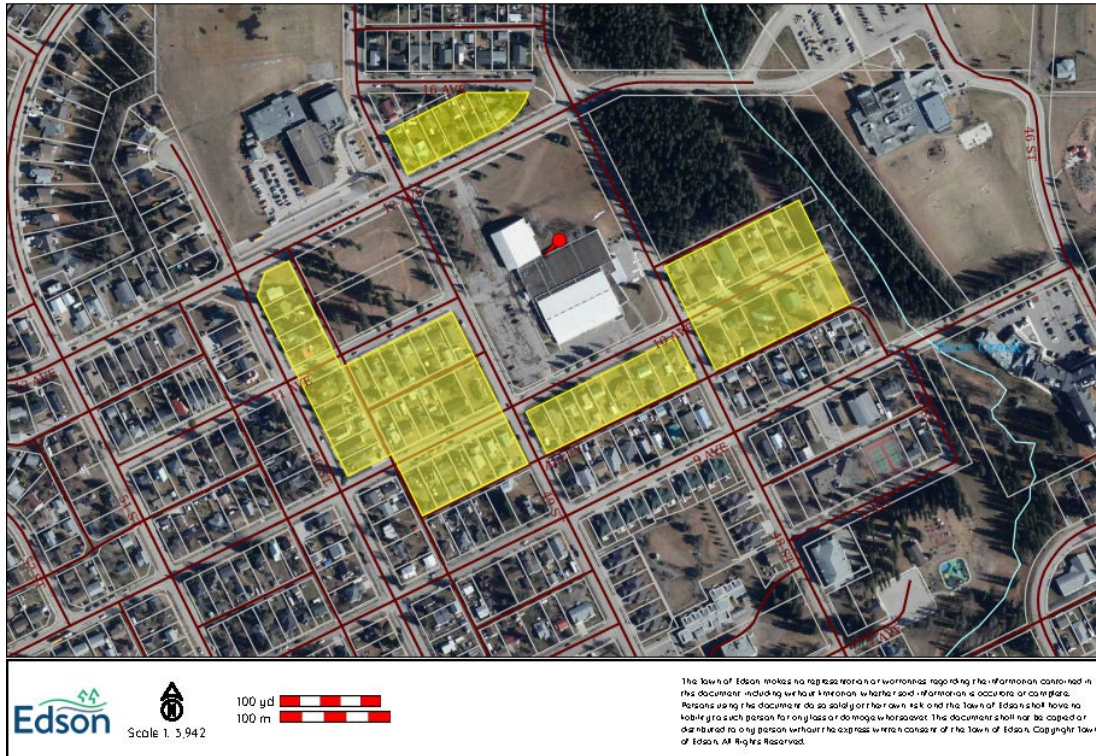
August 28, 2024: A community engagement session was held in the park, where directly impacted residents reviewed parking options and provided feedback.

August 29, 2024: Follow-up postcards with a QR code for online survey access were distributed to residents who may have missed the event.

August 30, 2024: The survey was shared publicly via the Town’s website and social media, allowing broader community participation.

September 3, 2024: An advertisement in the Edson Anchor newspaper requested public feedback via the survey.

September 8, 2024: The survey closed at midnight, with all responses collected for analysis.



Map of identified Adjacent Residents.

Advertising and Social Media Promotion

To maximize community engagement in the consultation process for the Edson and District Leisure Centre/Future YCE Multiplex parking options, a multi-channel advertising strategy, including print and digital media, was implemented:

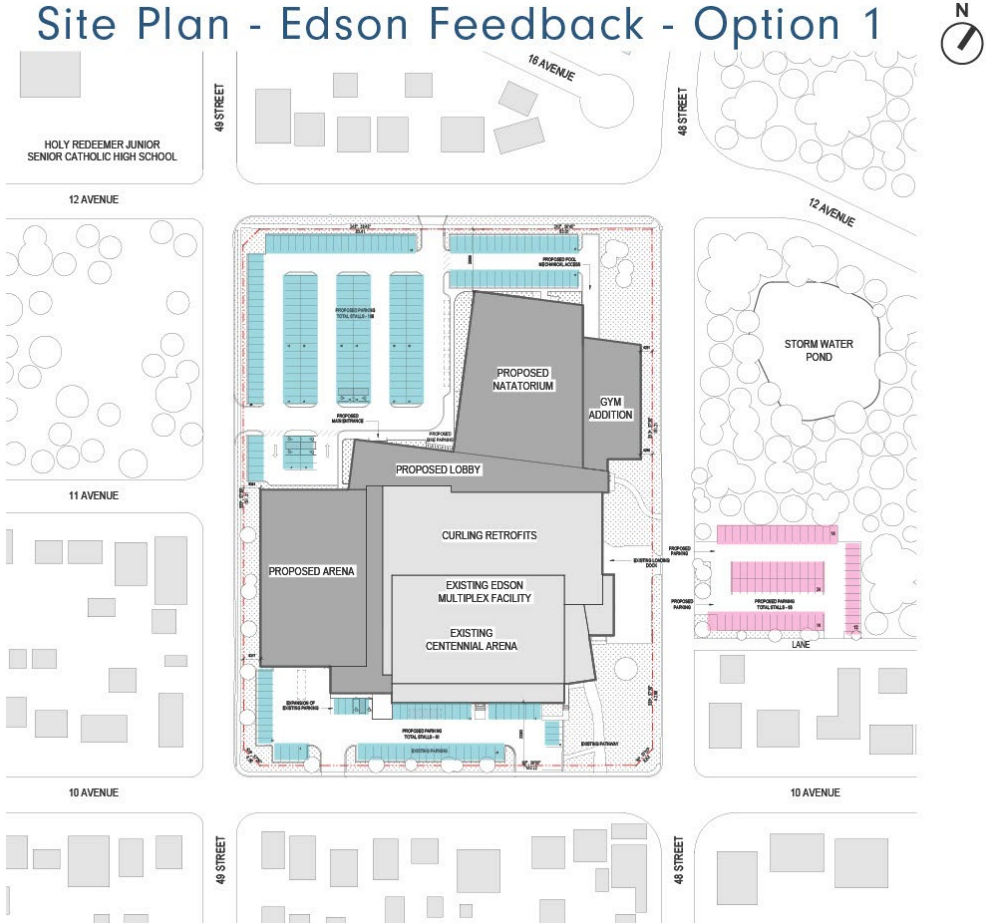
- **Postcard Distribution:** On August 19th and August 29th, postcards were sent to adjacent residents. These postcards included information about the community engagement sessions, details on proposed parking options, and a QR code for easy access to the survey for those unable to attend in person.
- **Website Announcement:** On August 30th, the Town's official website was updated with a dedicated webpage offering background on the proposed parking options, outlined the decision-making process, and included a direct link to the online survey, ensuring broad accessibility for all residents.
- **Social Media Campaign:** The Town used its social media platforms, including Facebook and Twitter, to promote the parking survey and engagement session. Posts were strategically timed to coincide with key dates, such as the August 30th public survey launch, and included visuals and survey links. Targeted ads were also used to broaden outreach within Edson and nearby areas.
- **Newspaper Advertising:** On September 3rd, an advertisement was published in the Edson Leader Newspaper, encouraging public participation in the survey and feedback on the proposed parking options.

This combination of print, digital, and social media efforts ensured both adjacent residents and the wider community were informed and engaged, leading to substantial participation in the parking consultation process.

Survey Results

Question One:

What do you think of the proposed parking location at Option 1?



Support:

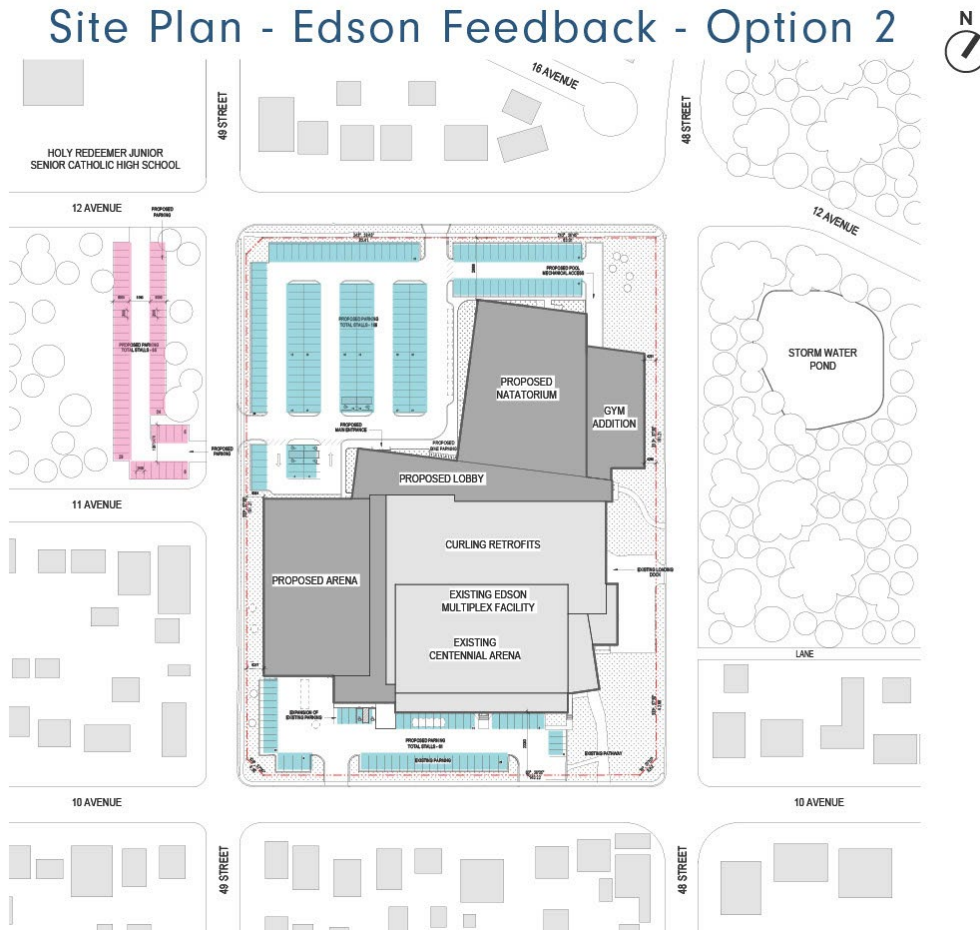
- Some respondents liked that Option 1 would reduce congestion on the busiest streets (12 Ave and 49 St) and redirect traffic to less congested areas.
- They also appreciated the potential for creating additional access points for the Leisure Center.

Concerns:

- Significant opposition was expressed due to the removal of green spaces and trees.
- Concerns were raised about the distance from the main entrance, as well as issues of safety, vandalism, and potential misuse by teenagers.
- Many felt the parking location was too far from the entrance and would not adequately accommodate large events.

Question Two:

What's your opinion on the proposed parking location at Option 2?



Support:

- It is closer to the main entrance, providing easier access to the facility.
- It utilizes already cleared space, avoiding impact on residential backyards.
- Potential for future expansion was valued, especially given the facility's multi-use nature.

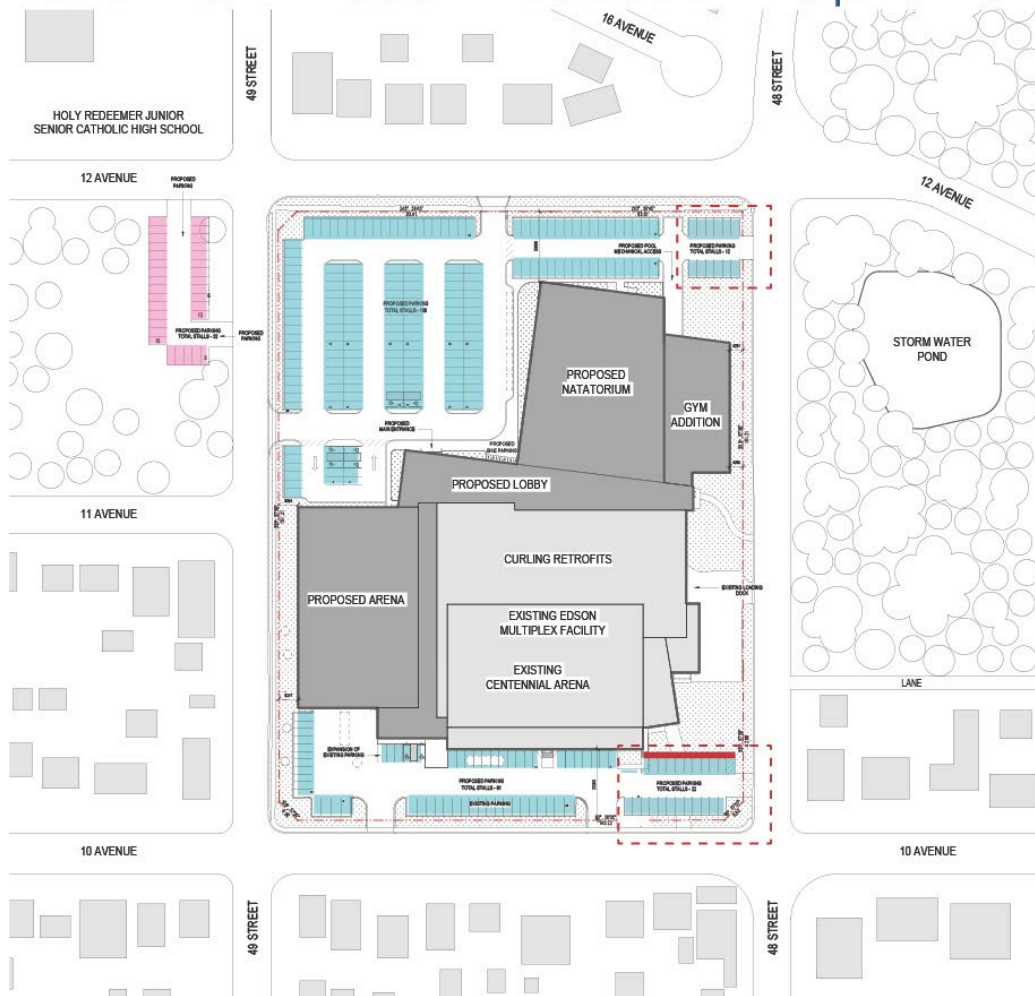
Concerns:

- Several respondents were against turning Water Tower Park into a parking lot, citing the loss of a valuable park space used for skating and other community activities.
- Safety concerns were raised about traffic near schools and pedestrian crossings.
- There were also worries about students occupying parking spaces during school hours.

Question Three:

How do you feel about the proposed parking location at Option 3?

Site Plan - Edson Feedback - Option 3



Support:

- This option was favored for its balance of preserving green space while still offering additional parking.
- It kept most parking on the facility's grounds and was considered the least invasive to residents.

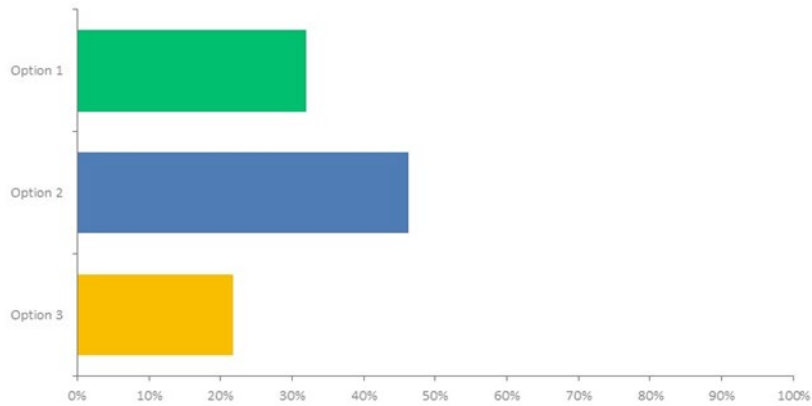
Concerns:

- Some respondents felt it did not offer enough parking.
- The parking location near schools was again a concern, particularly for student misuse and potential traffic congestion.
- Some felt that it did not make the most of the available space and might lead to capacity issues in the future.
- There were also doubts about whether it would be used effectively due to its distance from the main entrance.

Question Four:

Which of the proposed parking location options would be your preference?

Answered: 188 Skipped: 0



ANSWER CHOICES	RESPONSES	
Option 1	31.91%	60
Option 2	46.28%	87
Option 3	21.81%	41
TOTAL		188

A total of 188 participants responded to the question, with no skipped responses. Option 2 was the most favored, receiving 46.28% of the votes (87 respondents). Option 1 followed with 31.91% (60 respondents), and Option 3 was chosen by 21.81% (41 respondents).

Question Five:

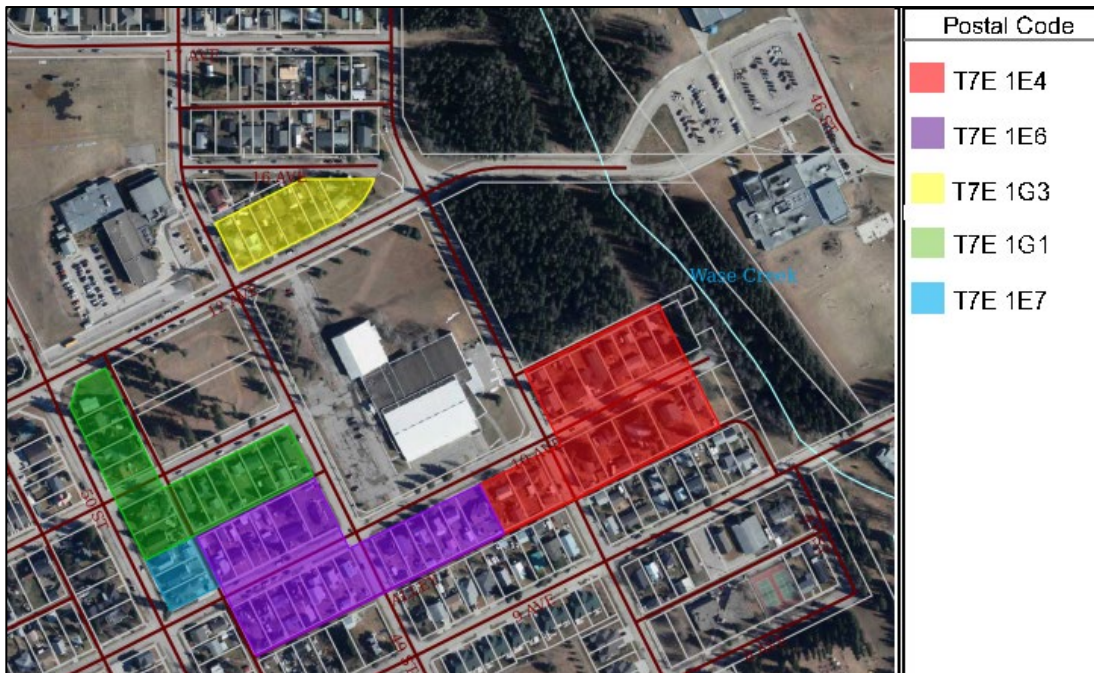
Could you please provide your Postal Code? This helps us understand where our feedback is coming from.

1G3 T7e0a5 T7E1G1 T7E1G8 T7E1E4 T7E1X1 **T7E 1G1** T7e1w3
T7E T7E1M4 T7E 1E4 T7E1Y4 T7E1G3 T7E1H5 T7E 1W3

Of the 188 responses, we have identified 36 responses from residents of adjacent areas, via postal code.



Map of



adjacent areas postal codes

Appendix 1: Public Comments

Question One:

What do you think of the proposed parking location at Option 1?

Answered: 144 Skipped: 44

"This option provides parking at a second location away from 12 Ave and 49 Street. A second entrance to the leisure Centre could be accessible on the east side of the building. Presently when large events like hockey games, Charity runs etc. are going on at the leisure Centre traffic and parking becomes very congested on 49 At. and also along 12 Ave. We often find it difficult to park near our home and even get into our driveway from 12 Ave. Adding more traffic to this area is going to make it even more congested. Keep in mind that we already have 3 schools with their drivers using these roads. These school also sometimes have tournaments, school events etc. that use these roads and they may be at the same time period at the Leisure Center is busy making congest on the road dangerous. This option takes some of the traffic to a different area away from the bottleneck. It still does not completely solve the problem for out neighborhood which is a 'residential' neighborhood"

"Hate it"

"Not nearly enough parking!!! Behind Center is not ideal unless access to lobby is also available from this side."

"Would there be access to the facility from the east side of the building if the parking was here?"

"I hate the idea of removal those trees."

"Hard to tell where any doors are so as of now it's far from main entrance but might be good to have a bit of parking on other side"

"It doesn't make sense to remove the trees in a good green space when water tower park sits unused. That park has always been a wasted space (aside from the skate loop which would be easily relocated)."

"Yes"

"No"

"We think this is the best option. There is already enough traffic on 12th avenue without adding another parking lot on Water Tower Park. During design and construction, to help out access to the building on the East side would it be possible to put in a second entrance to the building for the people who are parking on the East side of the facility. This would negate the concerns that people would not park on the East side where they would have to walk all around the facility to gain access to the West Entrance."

"I prefer Option 1 as it leaves the Water Tower park to continue use as green space/skating loop in the winter, which would be a nice addition to the facility. I wonder if it would be possible/safe, to include a walking path from the east parking lot to and around the new stormwater pond with some lighting and maybe a few benches. Would make for a nice

addition to walking trails. But safety with limited sightlines could create concerns. Just a thought.”

“Garbage”

“The parking lot in the green space looks like an after thought. The property owners may have an issue with the trees being removed for a parking lot as well. this also effects the existing walking path for kids walking to the schools”

“Best choice for loading and unloading for exhibition or event’s staff And staff parking”

“This is the best option but could add parking to the leisure center parking lot like option 3, and make the parking lot in pink, smaller ~32 spots. Also best to not have access into the back lane, homes in back would not like to have people accessing their back lots. Could the pink parking lot not be skinnier and longer and extend North up 48 st? Maybe one direction traffic both entrance and exit on 48 St. this would limit lights shining into back yards of homes. Gating off the parking after hours will prevent people using the lot at night as a party area. The pink parking would be good for access to walking trails in the forest and could provide future access for more trails and recreation opportunities.”

“I 100% disagree with this location . Why would the town remove trees in a green space to provide parking . The parking lot now is rarely full . Why weren't any of us that live on 10th ave consulted before this went to vote .. The reason I bought in this location was because there was no houses behind me and I could walk right into the trails .. A parking lot here will decrease my property value (not taxes tho) . Angry resident”

“Not the best choice”

“Okay, may be disruptive to those on 10th east of 48th street. Gives best option for future expansion.”

“This option with the overflow parking location is the safest, in my opinion. Being someone who lives a stone’s throw away from the Rec center, you do not want people crossing over 49th street, especially children! It’s just too busy a street!”

“Junk”

“Not crazy about parking at the back of the bldg.”

“Losing the treed green spaces area not worth it when we have none tree options”

“I don't like that there is a lot on a separate block. There is also the concern of vehicle security given the forested surroundings and that already teenagers park in the recreational parking lot but at least they are in the open where they cannot behave in a manner that is inappropriate/destructive.”

“I like this option the best because where that extra parking lot is you won’t have any school kids parking there while they’re in class unlike option 2&3”

“yes”

“No”

"I would prefer the additional parking be a bit closer to what looks to be the main entrance. This option does not accomplish that. There is also a walking path where this is proposed, let's leave that in place."

"Having additional parking on the backside does not seem like a great option. Best to keep it closer to the main entrance."

"Out of the way parking. Taking away green space"

"Looks good"

"Too far away from the entrance."

"Furthest away from the entrance. Inconvenient."

"Big No! We love the woods and trails backyard. Please leave it alone. Thanks!"

"Keep the trees 🌲 "

"Don't like this option. Too much nature is destroyed "

"As a resident and homeowner at 4740 10th Ave for twenty-six years I have no desire to have a Parking lot in my backyard, my concerns, noise, pollution, litter, and property values going down, also removing trees to build a Parking would be detrimental to the environment, option two the Water Tower Park which is already an open space would be far more suitable."

"Not enough parking! But great concept, please extend the parking lot."

"This setup allows for more direct access for people coming from out of town (county persons, bus access, etc.). Also doesn't take away from the skating loop in the winter. This is the best option but combine it with option 3 in regards to getting rid of the walking path in the southeast corner and replace it with parking as well."

"Wrecks back alley for residents when other parking options are available that don't interfere with alleyways"

"Costly, ripping out natural land for a parking lot"

"Option 1 is the best in my opinion. It will cause the least amount of traffic near holy redeemer. This will have less of a chance of kids getting hit by a vehicle"

"Option 1 is better than 2 and 3"

"Absolutely not. Main entry doors are on the other side- keep parking there. Leave the green space alone."

"I like this proposed location as it could provide more parking for those looking to utilize the gym when the main parking area is busy during hockey tournaments or other events."

"Proposed parking to far from the entrance of the facility "

"Yes! We need more parking!"

"Not a big fan of the type of lot across the street"

"This is my favourite option. I like the idea of still having a green space across from the facility. Best option"

"Noooo do not touch the small wooded area"

"To far from main entrance,"

"It's good"

"Yes to this one."

"This is my preferred option. There is enough greenspace in the woods that a small parking lot there will work nicely as overflow without compromising the other greenspaces in the park across from the school. It also means there will in theory be fewer small children playing near that parking lot."

"Why would you put parking for a facility nowhere near the main entrance? That's ridiculous."

"I think that would be a good use of land"

"Not a good location due to the storm pond and the small creek that runs thru parkland and Pinegrove. Sink holes and more work to do"

"I would rather not have the forest area near parkland destroyed for a parking lot. 48th street is also busy during school hours and this might cause more traffic congestion or pedestrians walking and causing dangerous situations"

"Likely not enough spaces"

"Option 1 is ok but still has the potential of the same issues as the other ones."

"Crossing busy 48 st lose wooded area across 48 st"

"Should be pushing as much traffic through lobby as possible."

"Not enough parking onsite"

"Wooded area feels less safe, more opportunities for vandalism."

"I personally love this, as it is unused land. I wish there was an option for additional comments. So I'll put it here. Both larger parking lots could be utilized due to the size and need for parking in the area for both the leisure center and holy redeemer. As it stands now when school is in and a major event is put on at the leisure center the area is so congested and dangerous for drivers and pedestrians. We need more parking 100% that doesn't impede or irritate the existing residence in the area. I'm in the county so the only issue I see is the parking"

"Do not care for the parking behind the residential houses. Also people walk through this area with their dogs or by themselves. Also is a bit of a walk for people to get to front doors especially the elderly. Doesn't flow well. It becomes out of site out of mind."

"I like this option because it doesn't disturb the natural landscape and the little sliding hill at Water Tower park"

“Good idea”

“The parking on the north side looks fantastic. The pink stalls to the east are a wonderful addition and will most definitely be utilized. I suppose with parking along the street it might be enough for tournament weekends. I like that the parking is more evenly available around the building in this design. It’s not concentrated north west.”

“Best one”

“Ok”

“To inconvenient to lobby location and busier street.”

“Would prefer no parking lot at the woods to keep it natural. Would also require new crosswalk and sidewalk at 48 Street for safe crossing.”

“Would be a good location to stage trailhead. As part of the build please don’t loose the trail, take the opportunity to improve the trails through that area that link to our great trail system.”

“This would be good for a players entrance if there is a straight hallways to dressing rooms.”

“This is good spot for parking.”

“not the best spot lets get started”

“Based on landscape in Edson (think to when we proposed building the whole thing in Hillendale and couldn’t), it seems being beside the pond isn’t a great idea. People don’t generally park on that side now so this will likely be new traffic on that side. It’s not realistic that the door on that side could be opened by staff consistently - for example during morning lane swim the lifeguards wouldn’t open that side.”

“I am not a fan of this option. Leave that forest as it is!”

“Not really”

“This would be the most costly as more trees would need to be removed to make space. Water Tower park sees minimal use and would still leave a considerable amount of green space.”

“To far from lobby”

“Not a good idea at all knocking down The Bush to build a parking lot behind peoples backyards, dropping the price of their homes and getting rid of the walking trail makes no sense at all.”

“I oppose this as it puts parking across from people's backyards and on the back of the rec centre. The other options makes more sense. It also cuts down some of the forested area that makes Edson, Edson”

“It would be ridiculous to take out the walking trail and bush. The houses along the bush line would have constant traffic (vehicles and people) and noise all day and night. They would have no privacy in their backyards. Crazy to get rid of the trees and walking trail. Not to mention the homes on 10th would most likely decrease in value as they would be

looking out onto a parking lot, and not the green bush and wildlife that are always there. You would also have a lot of foot traffic crossing the road which is quite busy at times. This raises the risk of pedestrians getting hit. This option should not even be considered.”

“I think this is likely the best option. One by high school will just be filled with school vehicles I would think. Having had 2 kids attend HRH they don’t love the HRH parking lot at all.”

“This is a good spot for the parking area but more spaces are needed.”

“The people living on 10th Ave most likely would not want to see the tree removal done”

“Will there be an entrance on that side of the building? I don’t like the idea of removing the green space trees I don’t like how far it is from the other parking - a lot of circling to find a spot. People may just end up parking in front of houses on the other side”

“this is the best plan”

“Too out of the way”

“I don't like the parking east of 48th, in the mature green space. With it being in that corner, next to alley and forest they will be suspicious activities there for sure.”

“Seems like a better use of available land compared to other options”

“I don’t like removing the forest.”

“Not sure if there will be an entrance on the east side if not it would be a lot of walking to get to the main entrance.”

“NO”

“This would be ideal if the parking spaces are angled and the green spaces on the leisure center were utilized better as well as how it is zoned on the map is in white and would not disrupt the walking trail too much on top of that it would deter kids from smoking and littering back there as I consistently during school hours pick up garbage when I walk that section of the trail. I believe this would create the space needed for parking.”

“Don’t want to see those trees removed”

“Not convenient access to main lobby.”

“Too many trees removed and cuts off walking trail access.”

“Not a good idea.. People will have to walk around the building to enter the arena. Plus cut trees, flatten the land, & build the lot... Which will cost more, than putting a parking lot on an already area with no trees.”

“I like this option the best but could you show the existing trail in the offsite parking lot? Better location for cars because out of way and not in open green space. We have enough trails, and it looks like the existing trail will not be affected to the east. You should show the walking trail on your option map for transparency”

“Option 1 is the best option with modifications. Switch the storm water pond with parking. This way residents on 10th will have a upgraded pond view like in Hillendale and there can be a forested tree buffer between the pond and the parking lot. Also utilize the North East

and South East corners of the complex lot for parking. With the parking on the North section of the lot it will also be closer to the main entrance than with it in its current location. The storm pond on the downhill side of the parking lot will also be a good collector for the snow-melt from the parking lot”

“Trails are in there would need redone to not lose them”

“I prefer having parking in the forest as the water tower park is used for skating rink, school PE and outdoor classroom learning, and many neighborhood kids are often playing in the field, mostly young toddlers and children. My concern for this is the number of spots in the forest area and the access in the alley. The houses in the back likely do not want to have people driving behind their homes, and the concern for partying and reckless driving at night would bother me living there. The leisure parking and Kinsmen parking are used for racing at night and partying, and it is a continuous annoyance for the neighborhood. I propose a 32-spot angle parking with one directional access off 48 street. A narrow lot that can have access closed off on both ends with a gate or pillion, and barrier along the sidewalk to prevent people driving over the sidewalk, with opening for crosswalk to the back entrance of the leisure center.”

“I think that putting a parking lot on the furthest corner from the main entrance, and behind residence is the last option I would pick. Not only is this the furthest location from the entrance, but if I resided in this culture-de-sac I would be upset to have a parking lot on my back yard.”

“Nope. Further to lobby. Takes out trees”

“Don’t clear out perfectly good trees when there is plenty of cleared space already”

“Not good, too close to residential houses”

“I think the people living behind this parking lot might be upset about this.”

“Best of three choices. Keep the green space.”

“Yes make it happen”

“Yes”

“It's not much of an eye sore and is a pretty good option to getting more space. While I'm not the biggest fan of ruining perfectly good forest area I know its needed. This might be more work but its a great spot for a parking lot”

“Not there”

“I think this is invasive to the properties surrounding, and unnecessary”

“Not good. You have houses backing onto this option, you put their yards in everyone’s view. I would worry about vandalism.”

“Worst idea of the 3”

“Disruptive to local residents along 10 Ave east of 48 street. Terrible location with poor access to facilities.”

"My concern would be crossing the road when it's busy from a tournament"

"No"

"This makes the most sense to me."

"I do not like the pink area behind the houses"

"I think that's ruining a good treed area. Terrible place."

"This is the only option. Leave water tower park alone!"

"No, thank you. You would be cutting across a very popular walking path used by the general public but also by the schools."

"I like and prefer option #1. Leaving that green space there is best. There is lots of parking on the streets around the new proposed complex. The town should make the park area into residential or multi-family lots. And not burden town with more upkeep like a parking lot or park."

"It takes away from the trail system, which I know is highly used. It also puts parking directly behind current residential homes, which is not desirable."

"No!! It's in my back yard. Please please do not make a parking lot there. We already have enough noise with the area traffic. We also don't want the lights shining in our back yard. Option 2 is the best"

"Would not park there, would not feel safe, as it is too secluded."

"This is not an option I would choose because trees will be cut down. Also, it is surrounded by trees on two sides, and I would not feel as safe parking there. It's easier for unlawful activities to go undetected. Security would also potentially be a problem."

"This is my preferred parking option but I am not sure it is feasible with the distance to building doors."

"This is the best option. "

"Absolutely not! Why!?!? This would cost more in tree removal and would wreck a beautiful spot in town."

"There will be a few unhappy residents on 10th. Walking trails will be affected. Should consider closing 48 st between 10th and 12th. Least impact to parks. Utilize NE and SE corner of complex lot for parking. Maybe close 48th between only 11th and 12th and make the road way the parking lot as it would be closer to the entrance and not eliminate green space. It appears only 32 sites would be required along 48th from 11th to 12th ave to satisfy the requirements if the NE and SE corners were also utilized. Many options have not been considered this late in the planning stage. This should have all been approved prior to development permits being approved for the project."

"It seems a little out of the way and probably more expensive to build due to the extra dirt work and tree removal."

"I think that will be more costly with the flow of people coming in another entrance. I don't like it."

"This would be my preferred option so the park can be used for outdoor events and outdoor skating"

"Only thing I am wondering is how is access gained to the people who are parking on that side? Use of that space would make more sense as it is just bush and unusable space right now."

"I do not know about this area. And its use for recreation as it stands."

"This option is neutral in my opinion. Although not my first option. Losing this forest would likely effect residents who's property backs onto this green space from 10th Ave."

"This is the most suitable option. The parking backs on to an alleyway and it's in an unused forested space. This area will have the smallest visual impact to the neighbourhood and it also the safest crossing point with less traffic than the 49th Street collector."

"I think it's great"

"I lived across the street for more then 12 years, there is noting but stunting, drugs being sold, and rude teenagers that vandalized this property and my neighbours. Me or my neighbours have to fight with bylaw or RCMP to come enforce the laws and you already have cameras, signs and nothing is done. It's the same problem every year. I rather see the Side of the building every day then deal with the kids and people selling drugs. Me more none of my neighbours on 12 ave want the parking lot anywhere near us. Last winter people were doing donuts in the field and I couldn't even get the police to come. Put the parking lot on the south side of the building or I'll sell my house to the drug dealers. None of these options are acceptable"

Question Two:

What's your opinion on the proposed parking location at Option 2?

Answered: 146 Skipped: 42

"This option will cause the most problems for the people who live in the neighborhood as well as people involved in activities at the leisure Center. It looks like the north entrance to the parking area will be moved more east on 12 Ave. and people who like to drive fast through the parking lot may be slowed down from what is happening now (racing through the parking lot.) The area in pink will add to the place to hang out at all hours which is happening now in the parking area. Also a place to throw garbage even with garbage bins placed right in front of parked vehicles. This is happening now and may happen even more with more parking area."

"I like this one the best. But you still need more parking!! This is not nearly enough when there are hockey tournaments, swim meets, and curling happening at the same time."

"Would this option affect the winter skating oval?"

"This is the best option in my opinion."

"Like the amount of parking but without seeing where all doors are hard to give a great opinion but it's closer to main entrance"

"This is a better option but is not fully utilizing the multiplex property to its full parking potential. This option would allow for expansion to the parking in water tower park if required."

"No"

"Better"

"No we do not want this option. 12th Avenue already is a busy avenue. Plus you are adding more parking on the facility that exits on 12th Avenue. This would create a lot more traffic congestion. We do not want Water Tower Park to turn into a parking lot. It is a well used park winter and summer. A parking lot would take away from the park. PLEASE DO NOT PUT PARKING ON WATER TOWER PARK."

"49th street is much busier than 48th for pedestrian crossing."

"Not Bad"

"This is a better option to utilize the old water tower park which is currently wasted space aside from the winter skate loop. I suspect this option would still allow for a skate loop, if not, there are other areas in the town that can be used for a skate loop"

"Not the best takes to much of the park"

"Strongly dislike. this option has access of parking on 12th ave at an intersection that is very busy. Also the lights from this parking lot would shine into our homes on the park at night. The hill that is there currently helps with preventing noise from the constant partying at the leisure center lot. This lot also takes away from this park being used for quiet activities and provides an added risk for all the toddlers in the neighborhood and small children who use

the park. This would also limit the ice rink if this were to continue. We bought our home that backs onto the park so that we could enjoy the park space.”

“This is what I’d prefer, always thought this area could be used”

“Option 2 is the best option. The parking here will have a higher utilization rate I believe”

“Easiest access to the facility”

“Having overflow parking on the opposite side of 49th Street is not ideal. It is a busy street especially with the crew buses and emergency vehicles that use it! With the potential of kids running across the street and not watching and those big vehicles, it’s just a tragedy in the making!”

“Best”

“It looks like that would give the most parking.”

“Good option with future growth options in water tower park area.”

“I like that the separate lot is utilizing already cleared space but don't like that it is not all part of the rec complex block. Also, given the adjacent high School, there is no guarantee that those spaces will be used for the rec complex and not just by students that drive to school as a school overflow parking lot.”

“I dislike the parking lot being closer to holy redeemer as it’s a eye soar to the school and the kids will take advantage of that and park there while at school and 12 ave is already so busy at specific times this parking lot there will just make it a lot worse and can see more accidents here and most likely will be kids since it’s a kids school”

“No”

“Yes, you can never have enough parking. Front door is on this side.”

“This is the best option in my opinion.”

“Great plan! That green space is only utilized for the skating loop, would also double as parking for HRH!”

“Keeps vehicles and parking all in the same area”

“Existing green space that is useable and functional... might be a good place for byo propane firepits/ BBQs”

“Keep the parking close to the lobby entrance.”

“Too close to the houses on the south side.”

“Keeps the parking generally on one side of the building.”

“Don’t like this option. The round ice rink is invaluable during the winter. Families love to use the green space.”

“Not as effective as option 1. 49 street is too busy with traffic for pedestrian crossing to the arena.”

"This setup allows for overflow parking to be closer to main lobby doors which is convenient, but could cause traffic hold up at busy times such as school exit and entry times."

"Good use of green space that doesn't affect residents"

"Already an open area. Will be more cost friendly"

"See comment above. I think that the Tower Park should be used for a playground"

"This one makes the most sense."

"I see this proposal would work well for a sort of overflow parking area during big events. This could also provide more parking to the water tower park which may become more popular with the increased traffic around the new facility. Although a slight change would be to make the entrance/exit of this proposal lined up with the entrance/exit of the main parking area along 49th street. I think that would work better for traffic trying to cross 49th street between both parking areas when looking for parking."

"Best option as the parking is close to the entrance and if we need to expand we can as the space is available"

"Yes to this too!!!! I'm saying yes to two additional parking lots. As a swim club member, when we host an event and there is hockey going on too, both additions would be amazing!!!"

"Still unsure about how close the parking actually is but I like the less off site"

"This is my least favourite option just because it takes away green space but I would assume it is one of the cheaper options so I am not opposed to it. Third best option"

"Yes this is the one"

"I like this option the best. I think the more the better. When there are events at the multiplex we need the parking. I also think that HRH could use the extra parking which shouldn't interfere with the events at the multiplex."

"No don't want to ruin that park"

"No, in the winter we utilize Water Tower park with the Skating loop."

"I do not like this option because of the proximity to the school (where the parking lot may inevitably become an additional spot where teenagers get into fights off of school grounds (now with easier access to vehicles). It's also a park where little kids play, having a parking lot there means more risk to being hit by vehicles."

"Seems the most sensible"

"I think the school would end up using that more then the arena"

"Excellent parking spot. Close by and don't have to walk around the building as the other locations will be more in the back area than the main parking and entrance to the arena"

"Best option"

"This is okay, and seems to have a lot of spaces for big events."

"More spaces and more easily expandable if/when needed."

"Horrible place, for more parking, I live across the street from the current parking lot and local teenagers use it to hangout and listen to music and do burnouts after class till late into the evening. This issue needs to be addressed and delt with before any additional parking is considered."

"Takes more of water tower park nice to keep as much green space"

"This is the best option"

"I think this is the best option, most users would be able to enter lobby from same side where better lighting etc. will be."

"great all in one area and in front of entrance"

"This would be my least favorite. This green space should be protected."

"Not enough parking onsite"

"Option two works best in my opinion, as it's facing directly front of the entrance of the facility."

"I prefer parking option 2! The street crossing over to arena is less busy than the option #1 which would be a safer choice."

"I think this is a good idea. More people are using the faculties, just makes sense"

"Parking in the green space may help alleviate congestion on road next to HRH. Beneficial to both buildings. If green space is further developed (playground/outdoor volleyball courts/green shack) parking spaces will be beneficial)"

"I like this option as it could eliminate the parking issue for holy redeemer. So many vehicles parked on the streets making it more dangerous for pedestrian and Jay walking"

"Excellent! The flow is great, easy access to front of building. Looks great! Also consider at the front there where you have 4 Handicap parking stalls to make it all 6 as I'm know a lot of Seniors go for Aqua fit and will be using walking oval. And where you have 2 Handicap at front make it 4. There are lots of people in Edson who use handicap parking and 6 stalls isn't enough. Should be double. Only concern would be that HRH students might decide they can use as parking lot for their vehicles during the day, so would need to be checked daily by bylaw maybe. But love this set up and still room to do an oval S outdoor rink and look at that parking too."

"I don't like this option. This takes away from water tower park and it would make it less usable as a public space and as a green space for our children to play in every day."

"Also a good idea"

"I think it's nice to have the green space on the east side of the building. It adds some curb appeal and our town needs more of that. The parking in water tower park is smart and still

allows the green space to be used so it's best of both worlds for that block. I honestly think you need the stalls at water tower park as well as option 1."

"No"

"Nope"

"This is best option as it gives enough extra parking to eliminate so much street parking and better access to main lobby. Also, would provide additional parking for events at HRH."

"Decently sized and close to the main entrance as the park is currently bare, open-spaced and not well utilized. It would still need a crosswalk at 49 Street"

"Hard no. Park space has historical significance of the former water tower (which we should have saved as an iconic center piece). Also, a nice space across from the Leisure Center to further develop park."

"This makes more sense because the main entrance is on that side of the building"

"This is terrible idea. Continue to Develop this park space for our community and access for students/ youth."

"best option but still get started"

"Holy redeemer students will park here. Otherwise makes sense."

"I like that the overflow is across from the main parking lot"

"Lots of room nice locations"

"Best option and appropriate use of existing open space for parking closest to main entrance."

"Great distance from lobby. Easy to see where to enter. Especially if you're out of town."

"This seems like a better option"

"The pink parking area makes more sense here since it's on the same side as the main entrance. And it uses a park that is essentially never used."

"This option isn't too bad, but it does take away more green space."

"This would make the most sense, lobby on this side."

"I feel HRH staff and students will fill this. But otherwise it's a great option"

"This is just ok more spaces are needed."

"This is great as there is lots of parking, as long as it would not affect the skating loop you build every year"

"Location seems the best, front of building and close to other parking Will there still be a skating loop in that park with parking? Will HRH kids/parents use the parking as it's close to the school?"

"do not use water tower park"

"Excellent"

"Better. Taking green space for parking always sucks but at least not as many trees to be cut down like there would be in option 1. Also more light and traffic being closer to the facility to discourage suspicious activity."

"Would not want to see this remove the skating oval or a future playground or development in this park"

"I like that use of the already vacant grass area. Not a fan of adding it directly across from houses."

"Across from Holy Redeemer is not a good location, as the current parking lot is used for lots of drug use, and also lots of stunting and reckless driving done as well. Unless the new area would be better monitored, this poses a risk to the school and any youth that would be going to the new facility."

"Yes"

"Keep majority of parking at main entrance, the park while used is not used enough to warrant keeping it up each season, 48 st remains green and keeps the younger school separate from the center"

"No the neighboring residents use this location as well as HRH high school keeping in mind this would increase traffic in the neighborhood where children play and its already bad as most drivers speed thru the park zone on 12th Ave more options need to be considered this green space is to my knowledge zoned as a park not for parking."

"Perfect place"

"First choice although the empty lot to the west of the arena was supposed to be a nice park. I hope the rest of the lot is landscaped nicely and maybe has a park/playground area."

"I like this one as the park is not used for anything and less trees need to be removed to accommodate parking"

"Best option. Close to the other parking lot & direct entrance to the Lobby. PLUS there are not many trees there for extra cost to develop."

"I do not prefer this option, that green space is well used by me and my family, we have picnics and play soccer in summer there and skate during the winter. I have small children under five years old so I would not like the increased chance of accidents from cars in this area."

"Not a good option. Destroys park, reduces land value for neighbors, visitors need to cross busy connector road (49th) to access arena, already a busy intersection with kids crossing to the park and arena. Skating loop needs to be maintained as there are already very few parks in town."

"Not on the park space, school uses it, nice if town would do the skating loop more and maintain it regularly"

"I strongly dislike this option. it would eliminate 1/3 of the park and make this a continuous noise disturbance at night and day, and risk for kids playing in the park. the rink would also

not have space to be built as it uses this open area primarily for the loop. The parking also enters and exits into a busy intersection of 12th ave.”

“While this has many stalls offsite, I believe this to be the best option for parking. It is on the same side as the main entrance and you are not encroaching on anyone’s backyard yard. Looking at this site plan, it looks as though there will still be green space at the old water tower park. I would expect what it not utilized for parking would remain a green space to be utilized by the residents and visitors alike.”

“This seems the best option. Closer to the lobby, could be used by hrh for dessert theater nights, or basketball tournaments etc, as long as it is available for hockey tournaments. Nothing like a kid having to lug heavy hockey equipment a long way in the snow! Hopefully more accessible spaces available and ticketing.”

“Still close too houses”

“This seems more reasonable as it’s not right behind anyone’s home”

“Not good. Keep the green space.”

“It's a yes for me”

“No”

“I'm not the biggest fan of this I love the Greenery of that area and a parking lot ruins that look.”

“Option 2 looks like the best option”

“Better”

“This is better than option one, as the surrounding houses at least have a road between. It’s not invasive to the back of properties”

“Best option”

“Good access, limited disruption to local residents, 11th Ave between 49th & 50th street”

“Yes”

“Not in favour.”

“I do not like this one either taking away from the park”

“Great place! It’s not space used for anything else and already cleared.”

“This one makes sense. Not too many trees being cut down & easy access to complex entrances”

“Do not like this option. No extra parking needed. Leaving that green space there is best. There is lots of parking on the streets around the new proposed complex. The town should make the park area into residential or multi-family lots. And not burden town with more upkeep like a parking lot or park.”

"I feel this option is better than Option 1, but also takes away from use of the park (I.e. the skating loop)"

"This makes more sense to have parking all on one side instead of splitting it up."

"This is the best option!"

"This is my 2nd choice."

"Not ideal."

"No, leave that green space alone, it's too close to the school plus let's leave the area alone as it was a historic part of the town"

"Yea I think it's pretty great this park is pretty much unused. I understand the skating loop is there but I don't think it's a reason to do option 1"

"Parking lot here takes away from parks that the town has been so hard trying to develop and maintain. People have to cross a busy collector road to get to arena (49th St). Intersection at 12th and 49th is already very busy and adding another parking area here adds to the congestion and safety of arena visitors as well as student safety. This option takes away from town skating loop. Snow removal from parking lot would just be dumped in the green space taking away from skating loop that is used by residents and students (and kill grass for the summer). All neighbouring residents would constantly have head lights from vehicles shining in their home windows, as the current arena parking lot is used by visitors to the arena many times till 1am or 2am. A parking lot adjacent to residential properties decreases home resale value especially since it was previously a park. This option has never been presented or discussed in all the years planning and has suddenly come up out of the blue in the last week and a surprise to all. OWNERS of the neighbouring properties were not contacted about this impromptu information session and as a result it was a very poor turnout by people that will be directly affected. This is not an acceptable way to collect feedback from residents. Improper planning for parking through the development stages of this project. This option should have been presented before approval of the project proceeded. With any development in town for an individual or business one of the first questions asked is the parking spaces available before the development is ever approved, not one of the last questions! Definitely not a good option. —Use the space in the NE and SE corners of complex lot for parking and don't include that area for weeds to grow. The Town would be going backwards changing this park into a parking lot (at a cost of \$300,000 - \$400,000?). The HRH students regularly utilize this area for a park and adding a parking lot here makes the area more congested and dangerous. (Don't run and play in parking lots). With this option many neighbouring residents will be very unhappy with the Town and council."

"It's a good spot for it, it will provide extra parking for the driving students at HRH as well"

"Option 2 in our opinion makes the most sense and it is good that not the whole park will be turned to asphalt. We want to see continued use & enjoyment of the green space for decades to come."

"I think this makes the most sense for the customer journey. You are still keeping some of it green which is nice. Maybe you can hold small events in this parking lot like farmers markets?"

"This is my second preferred as it allows for some green space on the site for picnic tables etc."

"Option 2s location would be easier to gain access to the main doors."

"Takes up too much of a well used park that has been part of Edson's history. No from me"

"This option makes the most sense and is my first choice. The water tower park has never truly been well utilized. Any green space is beneficial and great to have for a variety of public uses but taking a chunk for extra parking spaces is ideal. This will also make the space better utilized and will likely benefit those in the area for better access to picnic space, etc. while using the new facility. It could easily become a low maintenance quiet green space as it has been within the rest of the space."

"This option removes valuable recreational space from the neighborhood and introduces an eyesore for those living on 11th Avenue. 49th Street is also a very noisy area as it is with stunt driving, adding a parking lot here will only make matters worse and take away space that kids play daily."

"Keep an original green space in Edson"

"I lived across the street for more than 12 years, there is nothing but stunting, drugs being sold, and rude teenagers that vandalized this property and my neighbours. Me or my neighbours have to fight with bylaw or RCMP to come enforce the laws and you already have cameras, signs and nothing is done. It's the same problem every year. I rather see the side of the building every day then deal with the kids and people selling drugs. Me more none of my neighbours on 12 Ave want the parking lot anywhere near us. Last winter people were doing donuts in the field and I couldn't even get the police to come. Put the parking lot on the south side of the building or I'll sell my house to the drug dealers. None of these options are acceptable"

Question Three:

How do you feel about the proposed parking location at Option 3?

Answered: 144 Skipped: 44

"This is pretty much the same problems as option 2, except with some of the parking going to 10 Ave and 48 St. - giving the people who live there a taste of the garbage thrown around and partying that goes on as well as increased traffic in their area"

"Yup this is the one."

"My least favorite"

"The same as option 2, would this affect the winter skating oval?"

"Weird concept. Why not use the pink area of 1, and the red area of 3?"

"Not as much parking so least favourite"

"This is the best option. it leaves the green space intact and utilized water tower park leaving room for future expansion as shown in option 2."

"#3 is my favourite."

"No"

"This is definitely the best option in my opinion"

"Please do not add any parking on Water Tower Park. It is a well used park summer and winter. We do not need anymore congestion on 12th avenue. We do not need additional trees removed from Water Tower Park."

"49th street is much busier than 48th for pedestrian crossing."

"Parking spaces are maximized around the building. Should be more handicap parking on south side of building. Water Tower Park parking should have the same layout as option #2. Parking on streets gets very congested and should have better line of sight at corners and street exits from facility. 20ft wide crosswalk from Water Tower Park to main facility. Remaining Water Tower Park space area should be relandscaped and an outdoor rink built. I believe an outdoor rink would work well with the new facility. Future outdoor hockey games, pickleball, basketball, courts for the summer, etc."

"Best Option"

"This is the best use for the existing footprint of the complex. The trees to the east will give a sense of out doors as well as the trees in the water tower park".

"No"

"I like the leisure center parking and think this would work with option 1. I do not like the parking in pink in the park, and also the access is on a busy intersection. I like that it is smaller but also worry about noise and lights in my home at night, also the added noise at lunch hour as teens will use that space and are often driving recklessly through the parking lot of the leisure center. I visit the pool often and it is quite concerning how they are driving. I would not want parking lot in a park where my kids play. If this were the only option I



would suggest a hill on the parking lot side like there is now to limit lights entering homes and provide a bit of a barrier between the lot and the park.”

“Not bad but option 2 is better”

“Least invasive to area residents”

“Having overflow parking on the opposite side of 49th Street is not ideal. It is a busy street especially with the crew buses and emergency vehicles that use it! With the potential of kids running across the street and not watching and those big vehicles, it’s just a tragedy in the making!”

“Good”

“You are utilizing all the arena space plus extra across the road. Which will also provide some extra parking at HRH. Which during a busy event would be great.”

“Not enough parking”

“Option 2 and three combined. Do it right first time. To much parking will never be a problem”

“I like this option especially given entrances all around the building will have close parking depending on what you are visiting the complex for and while I am still not in favour of the additional parking across the street in pink, this option allows for it to be less stalls in that separate lot”

“I don’t mind the parking lot in the red lines where the existing pathway I don’t like the parking lot by the high school that Ave is already to busy doesn’t need to be more overloaded than it is”

“no”

“No”

“Also a decent option.”

“Prefer option 2.”

“Keep the vehicles on one side”

“I prefer leaving the micro green space”

“Less park space int this one.”

“Best option. Keep it away from the houses.”

“I believe that this option is best as the majority of the parking is retained on site, and what looks to be overflow parking is nearby with good access/egress.”

“This option seems to be the best solution to add a little more parking without destroying too much nature”

“We need the green space, not effective solution.”

"The green space this parking lot takes up on the southeast corner is not necessary. More parking is a much better option than a walking path. For example all the green space now is useless at the rec complex when patrons have to park on the street for lack of parking space at busy times."

"Best option, using space arena has allotted. Should combine option 2 and 3 be the best choice"

"See comment above"

"Don't like this one - very busy pedestrian corner. Keep the line of site wider (without the parking right there)"

"I think the town would better off doing the full length rather than only half as proposed here."

"For easier access and cost saving build one large parking lot"

"No to this one"

"I don't like how that corner where would be pathway/ green space is random spots"

"I like this option. Second best option"

"No"

"Like the access to the pool facilities"

"Nope, don't want to ruin that park"

"Again see above"

"I do not like this option because of the proximity to the school (where the parking lot may inevitably become an additional spot where teenagers get into fights off of school grounds (now with easier access to vehicles). It's also a park where little kids play, having a parking lot there means more risk to being hit by vehicles."

"Seriously, I've been waiting for this to get built since it was first proposed over ten years ago. I was looking forward to my kids enjoying it. But alas, we are still waiting and one of my kids is an adult now and off to college. Recreation is what helps build communities. Get this done already!"

"Same as option 2"

"I find option 2 is better and more space"

"This is okay and still leaves a lot of green space"

"Not enough spaces and I would guess students would hang out in them."

"Same issues as stated for option 2."

"Option 3 avoids having to cross 48 st and maintains trees east of 48 st. Also retains most of water tower park"

"The addition on SE and NE corners would be nice to add to option 2."

"we still end up using some of the field and i think make it easier to find the entrance is always a benefit."

"I like that this option limits the space that is dedicated to parking."

"This one seems better. More parking onsite"

"Prefer this one with a balance of the parking close to all sides and entrances. And seems more contained then spread across the the roads. And if there a couple drop off/pick up zones to move traffic through. Looks like one by arena."

"2 and 3 seems most logical. With the least amount of tree removal and accessibility. Also the people who live along the alley on 48th Street won't have to look or deal with people parking basically in their back yards."

"Unsure how this will impact those with mobility aids (ramp impacted?)"

"I don't think this will satisfy the need for parking at all"

"Don't care for the additional red area parking otherwise same as Number 2"

"Don't like this option for the same reason as number 2."

"Not bad at all"

"I'd rather see more stalls at water tower park and have the curb appeal on the east side of the building."

"No"

"Nope"

"To small"

"Entrances at the extended portions of the proposed parking are too close to the intersections. Also the parking lot at the park is undersized and far."

"Smaller but still no."

"That might not be enough space for the very busy weekends"

"No this is terrible idea. This park should be further developed for use in our community."

"not as good as 2"

"Holy redeemer students will park here. Otherwise makes sense."

"This makes the most sense. Optimize the land around the facility and having the overflow across from the main parking lot."

"Not as easily to a main entrance"

"If Adding parking to water tower park already, would make sense to complete one entire lane rather than expand a second area. requiring base work and paving in 2 separate areas."

"Easy to see entrance but not big enough"

"This seems like a better option"

"The extra parking on the main area is a good idea"

"In my opinion, this option would be best. It leaves more green space. The more parking on site the better."

"Not enough parking."

"Not enough parking. Not a great spot to place all the parking. Some children are carrying large bags."

"This looks like the perfect option as there is plenty of parking in the leisure lot and partial overflow parking across the street"

"Not much extra parking - if you have to use the park make it worthwhile"

"do not use water tower park"

"No"

"Best! Still leaving some green space in the water tower park. Using that southeast corner for parking is better as well as no one uses that current green space for anything. Less mowing for the facility."

"See #2"

"I think this is the best option. It's using an area that already vacant and clear of forest. The gap with grass between it and 11th ave appears sufficient. It could maybe be made better if a berm was put in or bushes."

"This seems to be the most logical option and less disruptive than option 2 in regards to the park there"

"Yes"

"As stated in option 2 this is not going to work for the neighbors in the immediate area as nobody wants to have headlights shining thru their windows at night which does happen now already. My property taxes have already gone up over 3,000 a year and at this point if the town keeps going with adding projects to the already existing project for the multiplex we are going to be taxed out of our homes this should have been thought of and budgeted for when this plan started. Other options can be considered where the leisure center property is now."

"Smaller footprint in The park is good but likely further from entrance doors for the extra spaces. If not further to the entrance then I factor this option"

"Decent option, not my favourite but preferable to option one"

"Go with option 2, it's bigger then option 3. That way there won't be more taxes being charged to us when you decide again to make the parking lot bigger."

"I prefer no parking in this free space because we should keep it green since the school is there and people use this space (Kids from school, preschoolers, families). Parking in this option would increase congestion and not look good for our new multiplex. I use this space summer and winter with my family and parking would take that space away. For option 1: The people off tenth ave shouldn't be effected, there's a lane there, and the easterly trail could be moved to the right of way. Also, some parking spaces can be reduced and exempted. Do you need the maximum? Maybe to reduce cars parking on street in front of homes and avoiding that issue but look into exempting some spaces if not already. Again, show the trails on option 1 to see where they are moved to or which ones are being eliminated from this option."

"Not a good option. Destroys park, reduces land value for neighbors, visitors need to cross busy connector road (49th) to access arena, already a busy intersection with kids crossing to the park and arena. Skating loop needs to be maintained as there are already very few parks in town. Use option 1 with modifications."

"Same as option 2 not in park."

"I like the additional spots on the leisure center area but dislike strongly the parking in the park. Again the entrances are opening into a busy intersection of 12th ave and the added noise disturbance at night would be a huge concern. I propose moving the off-site parking of 32 sites to the forest area with access onto 48 st only (not the back alley). And the spots could be angled and make the entrance one direction only. Again adding gates to both sides and closing at night to prevent partying and noise. Also, adding a barrier to prevent driving over the sidewalk from the parking lot. A parking lot in the forest area would allow parking for potential trails here, or future recreation such as a cross country ski loop or disc golf course in town. I think there is an option 4 which includes forest parking like option 1, but with option 3 onsite parking. I have made up a drawing based on the neighborhood discussion session and sent to Doug Wagstaff based on the collaborative discussions."

"While not at the top of my choices, this option is not the worst of the three. Extending the parking in the southeast corner still puts parking at the furthest location from the main entrance. Would there be an entrance on that end of the building as well? Or only the existing exits?"

"Ok but 2 seems better. Both 2 and 3 allow for expansion"

"Use up more space in the empty field for parking"

"This one's the best option"

"Like this one and adds extra parking close to school"

"This one would work too. I live in the county but my sons play hockey here and children go to school in town."

"Not good. Keep the green space."

"This is the best option to utilize space at the facility and minimal disruption to forested/green space as well as residents."

"I like it"

"Maybe"

"This I like more than option 2. Understanding that the need for more parking space but not destroying the nice green space. Could possibly put the parking lot on the other side. As to not create more havoc beside the school."

"Fine"

"I feel this has the least effect on surrounding properties and keeps more on site"

"Too much wasted space"

"Disrupts multiple green areas."

"To far from the front entrance"

"Yes"

"Hate this even more."

"This is not ideal but a variance could be made on the stall number "

"Good idea if option 2 can't use the whole thing I guess."

"Not convinced about filling in the corner. It's nice for pedestrians to have a line of sight crossing that corner."

"Do not like this option. No extra parking needed. Leaving that green space there is best. There is lots of parking on the streets around the new proposed complex. The town should make the park area into residential or mult-family lots. And not burden town with more upkeep like a parking lot or park."

"This seems like the best option - ensuring close parking that doesn't require crossing the street, with minimalizing disruption to the green space"

"I'd prefer to see option 2. More parking together"

"This is the second-best option."

"This is my 1st choice. It is safe and uses a smaller portion of Water Tower Park."

"I think this would result in more traffic at the one corner."

"Same as option 2, No ."

"Don't hate this option but I feel like the spots in red would be under used in comparison"

"Parking lot here takes away from parks that the town has been so hard trying to develop and maintain. People have to cross a busy collector road to get to arena (49th st). Intersection at 12th and 49th is already very busy and adding another parking area here adds to the congestion and safety of arena visitors as well as student safety. This option takes away from town skating loop. Snow removal from parking lot would just be dumped in the green space taking away from skating loop that is used by residents and students (and kill grass for the summer). All neighbouring residents would constantly have head lights from

vehicles shining in their home windows, as the current arena parking lot is used by visitors to the arena many times till 1am or 2am. A parking lot adjacent to residential properties decreases home resale value especially since it was previously a park. This option has never been presented or discussed in all the years planning and has suddenly come up out of the blue in the last week and a surprise to all. OWNERS of the neighbouring properties were not contacted about this impromptu information session and as a result it was a very poor turnout by people that will be directly affected. This is not an acceptable way to collect feedback from residents. Improper planning for parking through the development stages of this project. This option should have been presented before approval of the project proceeded. With any development in town for an individual or business one of the first questions asked is the parking spaces available before the development is ever approved, not one of the last questions! Definitely not a good option. —Use the space in the NE and SE corners of complex lot for parking and don't include that area for weeds to grow. The Town would be going backwards changing this park into a parking lot (at a cost of \$300,000 - \$400,000?). The HRH students regularly utilize this area for a park and adding a parking lot here makes the area more congested and dangerous. (Don't run and play in parking lots). With this option many neighbouring residents will be very unhappy with the Town and council."

"Too small."

"This one looks expensive to re-do the grading there. My 2nd choice."

"Don't like."

"No opinion really, unless being able to access the main doors is easy."

"I like the extra spots on the property. Again no to use of water tower park space. Could angle parking be added to a wider rd way along 49th."

"This option doesn't make as much sense, we are still using space within the water tower area, while also needing to make extra space in front of the facility also. The amount of construction to remove a tiny piece of the water tower park seems insignificant."

"This option is less impactful to the area than option 2. However this option removes valuable recreational space from the community and introduces an eyesore for those living on 11th Avenue. 49th Street is also a very noisy area as it is with stunt driving, adding a parking lot here will only make matters worse and take away space that kids play daily."

"Better than option 2 but why not angle parking?"

"I lived across the street for more then 12 years, there is noting but stunting, drugs being sold, and rude teenagers that vandalized this property and my neighbours. Me or my neighbours have to fight with bylaw or RCMP to come enforce the laws and you already have cameras, signs and nothing is done. It's the same problem every year. I rather see the Side of the building every day then deal with the kids and people selling drugs. Me more none of my neighbours on 12 ave want the parking lot anywhere near us. Last winter people were doing donuts in the field and I couldn't even get the police to come. Put the parking lot on the south side of the building or I'll sell my house to the drug dealers None of these options are acceptable"

This final page is intentionally blank.

