



Edson

Traffic Bylaw



Following public consultation and review this spring, the Town of Edson's new Traffic Bylaw was put into effect in June.

Heavy Vehicles

The Traffic Bylaw clarifies rules for heavy vehicles in the Town of Edson. A heavy vehicle is defined as a vehicle with or without load and/or trailer weighing 7,500 kilograms or more, or exceeding 11 metres in length.

No person may operate or park a heavy vehicle in any areas of the Town of Edson unless on a road designated as a Truck Route, unless they are:

- delivering or collecting goods or providing services at the premises of customers;
- going to or from the business premises of the owner of the heavy vehicle;
- moving a building for which the necessary moving permits have been issued;
- going to or from the premises for the servicing or repairing of the heavy vehicle;
- pulling a disabled vehicle from a highway prohibited to heavy vehicles;
- going to or from or performing work on a highway, or adjacent site;
- traveling to or from a place that has been approved by the Town; or
- at such locations as have been designated by a traffic control device.

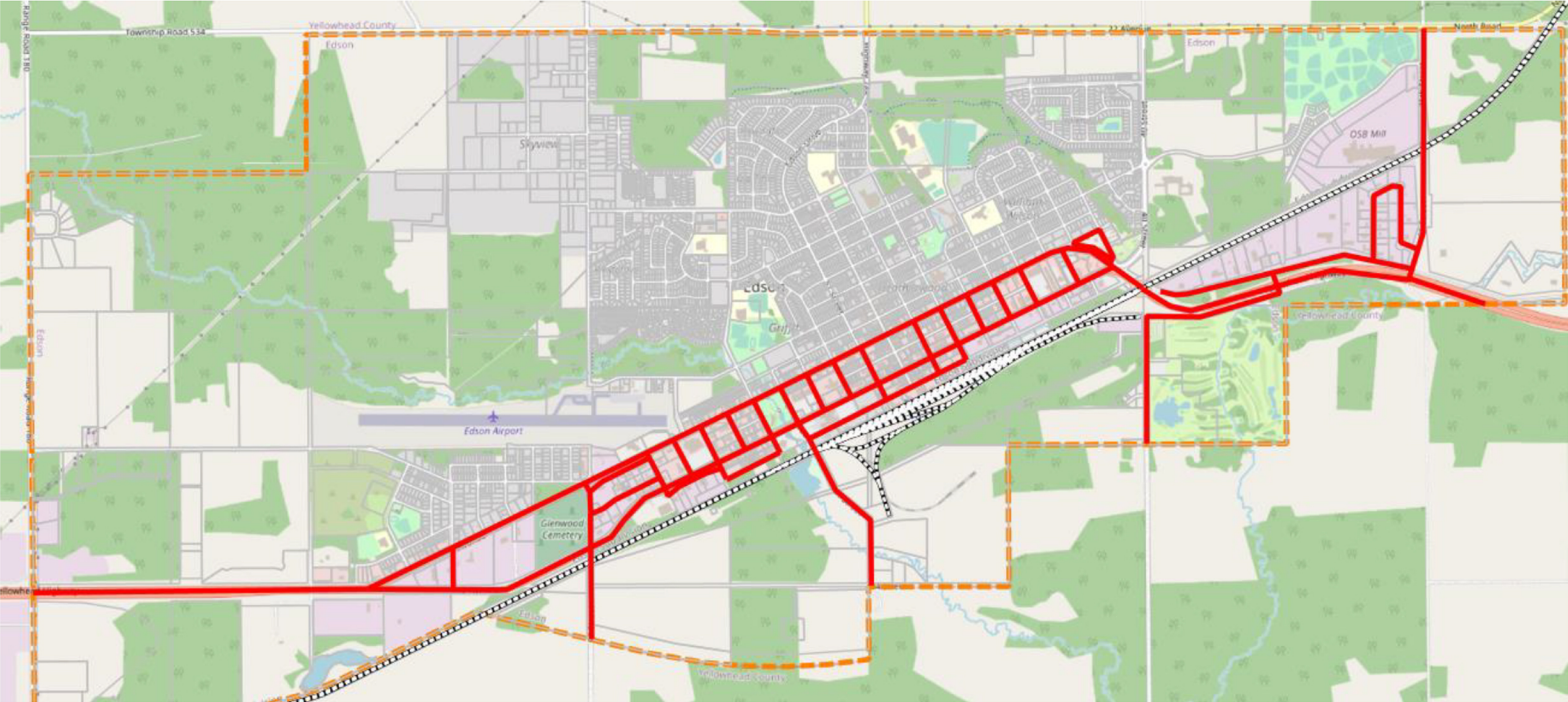
The use of engine retarder brakes is prohibited in the Town of Edson.

Dangerous Goods

No Person shall transport dangerous goods within the corporate limits of the Town in any vehicle other than on a Dangerous Goods Route, except when obtaining or delivering such goods to a location in Town, or receiving emergency repairs or service at the nearest service station or repair depot. In these cases the most direct routes must be used.

See the reverse for maps of the Truck Routes and Dangerous Goods Routes. For more information on the Traffic Bylaw, visit www.edson.ca/bylaws.

TRUCK ROUTE



DANGEROUS GOODS ROUTE

